

CLINICAL PRACTICE GUIDELINES

MANAGEMENT OF ISCHAEMIC STROKE

**2nd EDITION
2012**



Malaysian Society of Neurosciences



Academy of Medicine Malaysia



MINISTRY OF HEALTH MALAYSIA

Published by
Malaysian Society of Neurosciences
Secretariat: c/o Novartis Corporation (Malaysia) Sdn. Bhd.

Level 15, CREST, 3 Two Square,
No 2, Jalan 19/1,
46300 Petaling Jaya, Selangor.

Tel : +603 7948 1888
Fax: +603 7948 1818

Email: neuroscience.my@novartis.com
Website: www.neuro.org.my

Copyright @ Stroke Council, Malaysian Society of Neurosciences

All rights reserved. No part of this book may be reproduced in any form or
by any means without prior permission from the publisher.

Printed by:
Jiu Zhou Press Sdn Bhd, Petaling Jaya, Selangor D.E, Malaysia

ISBN 978-967-11469-0-3

STATEMENT OF INTENT

These guidelines are meant to be a guide for clinical practice, based on the best available evidence at the time of development. Adherence to these guidelines may not necessarily ensure the best outcome in every case. Every health care provider is responsible for the management of his/her unique patient based on the clinical picture presented by the patient and the management options available locally.

REVIEW OF THE GUIDELINES

These guidelines were issued in 2011 and will be reviewed every 5 years or sooner if new evidence becomes available.

Health Technology Assessment Unit
Medical Development Division
Level 4, Block E1, Parcel E
Government Offices Complex
62590 Putrajaya, Malaysia

Available on the following websites:

www.moh.gov.my/medical/htm

www.acadmed.org.my

www.neuro.org.my

CLINICAL PRACTICE GUIDELINES DEVELOPMENT GROUP

AUTHORS *(in alphabetical order)*

PROF DR HAMIDON BASRI Chairperson	Consultant Neurologist University Putra Malaysia, Selangor
A/PROF DR CHIN SZE PIAW	Consultant Cardiologist International Medical University, KL
DR LOOI IRENE	Consultant Neurologist Hospital Seberang Jaya, Penang
DR MAK CHOON SOON	Consultant Neurologist Gleneagles Hospital, KL
A/PROF DR MOHAMED SOBRI MUDA	Consultant Neuroradiologist University Kebangsaan Malaysia Medical Centre, KL
DATO' DR MD. HANIP RAFIA	Consultant Neurologist Hospital Kuala Lumpur, KL
PROF DR TAN KAY SIN	Consultant Neurologist University Malaya Medical Centre, KL
DR ZARIAH ABDUL AZIZ	Consultant Neurologist Hospital Sultanah Nur Zahirah, Terengganu

EXTERNAL REVIEWERS *(in alphabetical order)*

DR HJ BAHANORDIN BIN JAAFAR	Physician of Rehabilitation Medicine Hospital Serdang, Selangor
PROF DR GOH KHEAN JIN	Consultant Neurologist University Malaya Medical Centre, KL
DATO' DR LOH THIAM GHEE	Consultant Neurologist Sime Darby Medical Centre, Selangor
DATO' DR MOHD RANI JUSOH	Consultant Neurologist Ampang Puteri Hospital, KL
DATO' DR MUHAMMAD RADZI BIN ABU HASSAN	Consultant Physician Hospital Sultanah Bahiyah, Kedah
ASSOC PROF DR NOOR AZAH ABD AZIZ	Family Medicine Specialist University Kebangsaan Malaysia Medical Center, KL
PROF DATO' DR RAYMOND AZMAN ALI	Consultant Neurologist University Kebangsaan Malaysia Medical Centre, KL
PROF DR TAN CHONG TIN	Consultant Neurologist University Malaya Medical Centre, KL

RATIONALE AND PROCESS OF GUIDELINE DEVELOPMENT

Rationale

Stroke is a leading cause of death and disability in Malaysia. Thus, guidelines on the management are imperative to ensure best available therapy is instituted. The clinical practice guidelines (CPG) on ischaemic stroke was developed to provide clear and concise approach to all clinicians on the current concepts in the management of ischaemic stroke patients.

In Malaysia, a significant number of stroke patients are managed by non-neurologists. Therefore, it is important to summarise and adapt relevant clinical trial data and current treatment strategies to our local practice. The first CPG on ischaemic stroke was published in 2006. Since then, there have been many new developments in the management of ischaemic stroke. As a result, an update of the latest and current guidelines would be most appropriate

Process

This current CPG is the initiative of the Stroke Council of the Malaysian Society of Neurosciences. A panel of committee members was appointed comprising of neurologists, a cardiologist and a radiologist from the ministry of health, universities and the private sectors. Authors from the first CPG were invited to contribute on new updates before being discussed by panel members. The discussion started from early 2010 before being finalised and sent for the appointed reviewers.

The group members met several times throughout the development of the guideline. All retrieved literature were appraised by individual members and subsequently presented for discussion during group meetings. All statements and recommendations formulated were agreed collectively by members of the Expert Panel. Where the evidence was insufficient the recommendations were derived by consensus of the Panel. The draft was then sent to local external reviewers for comments. The level of recommendation and the grading of evidence used in this guideline was adapted from the U.S/ Canadian Preventive Services Task Force, and the Guidelines for Clinical Practice Guideline, Ministry Of Health Malaysia 2003.

The principles and layout follows the methodology stated in the Guidelines for Clinical Practice Guidelines booklet published by the Medical Development division of the Ministry of Health Malaysia. A standard methodology based on a systematic review of current evidence was used to look at the literature. These guidelines have been presented to the Chairman of the Health Technology Assessment and Clinical Practice Guidelines Council of the Ministry of Health Malaysia for review and approval.

Objectives

These guidelines are intended to provide awareness and education in

- identifying symptoms and signs of stroke
- scope of various types and causes of ischaemic stroke

These guidelines are intended to provide evidence in

- management of acute ischaemic stroke
- primary and secondary prevention of ischaemic stroke

These guidelines however do not cover

- management of cerebral haemorrhage
- stroke rehabilitation (already outlined in Stroke Rehabilitation Guidelines 2000)

Clinical Questions

The clinical questions to be addressed by these guidelines include:

- i) What is the current best practice for the management of acute ischaemic stroke?
- ii) What are the strategies in stroke prevention?
- iii) What are the effective non pharmacological modification in managing patient with stroke?

Target Population

These guidelines are to be applied to adults with ischaemic stroke as well as those at risk of developing stroke.

Target Group

These guidelines are developed for all healthcare providers involved in the management and prevention of ischaemic stroke in adults.

KEY TO EVIDENCE STATEMENTS AND GRADES OF RECOMMENDATIONS

LEVELS OF EVIDENCE SCALE

I	Evidence obtained from at least one properly randomized controlled trial
II – 1	Evidence obtained from well-designed controlled trials without randomization
II – 2	Evidence obtained from well-designed cohort or case-control analytic studies, preferably from more than one centre or research group
II – 3	Evidence obtained from multiple time series with or without the intervention. Dramatic results in uncontrolled experiments (such as the results of the introduction of penicillin treatment in the 1940s) could also be regarded as this type of evidence
III	Opinions of respected authorities, based on clinical experience, descriptive studies and case reports; or reports of expert committees

Source : U.S./ CANADIAN PREVENTIVE SERVICES TASK FORCE

GRADES OF RECOMMENDATIONS

A	At least one meta analysis, systematic review, or randomized controlled trial (RCT), or evidence rated as good and directly applicable to the target population
B	Evidence from well conducted clinical trials, directly applicable to the target population, and demonstrating overall consistency of results; or evidence extrapolated from meta analysis, systematic review or RCT
C	Evidence from expert committee reports, or opinions and/or clinical experiences of respected authorities; indicates absence of directly applicable clinical studies of good quality

Source : Guidelines for CLINICAL PRACTICE GUIDELINES, Ministry of Health Malaysia 2003

SUMMARY OF RECOMMENDATIONS

The following are management steps in which levels of evidence have been established.

Primary Prevention

Factors	Recommendation	Level of evidence	Grade
Hypertension	Treat medically if BP>140mmHg systolic and/or >90mmHg diastolic.	I	A
	Lifestyle changes if BP between 130-139mmHg systolic and/or 80-89mmHg diastolic.	I	A
	Target BP for diabetics is <130mmHg systolic and <80mmHg diastolic.	I	A
	Hypertension should be treated in the very elderly (age > 70 yrs) to reduce risk of stroke.	I	A
Diabetes mellitus	Strict blood pressure control is important in diabetics. Maintain tight glycaemic control.	I	A
Hyperlipidaemia	High risk group: keep LDL < 2.6mmol/l. 1 or more risk factors: keep LDL < 3.4mmol/l. No risk factor: keep LDL < 4.2mmol/l.	I	B
Smoking	Cessation of smoking.	III	C
Aspirin therapy	100mg aspirin every other day may be useful in women above the age of 65.	II-1	B
Post menopausal Hormone Replacement therapy	Oestrogen based HRT is not recommended for primary stroke prevention.	I	A
Alcohol	Avoid heavy alcohol consumption.	II-2	B

General Management of Acute Ischaemic Stroke

Factors	Recommendation	Level of evidence	Grade
Airway & Breathing	Ensure clear airway and adequate oxygenation. Elective intubation may help some patients with severely increased ICP.	III	C
Mobilization	Mobilize early to prevent complications	II-3	C
Blood Pressure	Do not treat hypertension if < 220mmHg systolic or < 120mmHg diastolic. Mild hypertension is desirable at 160-180/90-100mmHg . Blood pressure reduction should not be drastic. Proposed substances: Labetolol 10-20mg boluses at 10 minute intervals up to 150-300mg or 1 mg/ml infusion, rate of infusion for labetalol as 1-3mg/min or Captopril 6.25-12.5mg orally.	III III	C C

Blood Glucose	Treat hyperglycaemia (Random blood glucose >11 mmol/l) with insulin.	II-3	C
	Treat hypoglycaemia (Random blood glucose <3 mmol/l) with glucose infusion.	III	C
Nutrition	Perform a water swallow test. (Refer appendix F)	III	C
	Insert a nasogastric tube if the patient fails the swallow test.	III	C
	PEG is superior to nasogastric feeding only if prolonged enteral feeding is required.	II-1	B
Infection	Search for infection if fever appears and treat with appropriate antibiotics early.	III	C
Fever	Use anti-pyretics to control elevated temperatures.	II-1	B
Raised Intracranial Pressure	Hyperventilate to lower intracranial pressure.	II-2	B
	Mannitol (0.25 to 0.5 g/kg) intravenously administered over 20 minutes lowers intracranial pressure and can be given every 6 hours.	II-2	B
	If hydrocephalus is present, drainage of cerebrospinal fluid via an intraventricular catheter can rapidly lower intracranial pressure.	III	C
	Hemicraniectomy and temporal lobe resection have been used to control intracranial pressure and prevent herniation among those patients with very large infarctions of the cerebral hemisphere.	II-3	C
	Ventriculostomy and suboccipital craniectomy is effective in relieving hydrocephalus and brain stem compression caused by large cerebellar infarctions.	II-3	C

Acute Stroke therapy

Treatment	Recommendations	Level of evidence	Grade
rt-Pa	Intravenous rt-PA (0.9mg/kg, maximum 90mg), with 10% of the dose given as a bolus followed by a 60-minute infusion, is recommended within 4.5 hours of onset of ischaemic stroke. (new recommendation)	I	A
	Reasonable to consider intra-arterial thrombolysis in selected patients with major stroke syndrome of <6 hours' duration and ineligible for intravenous thrombolysis. (new recommendation)	II-2	C
Endovascular mechanical thrombectomy	May be reasonable to perform mechanical disruption to restore cerebral blood flow in selected patients with major stroke syndrome of <8 hours' duration and ineligible for or failing intravenous thrombolysis. (new recommendation)	III	C
	Concentric Merci or other endovascular device can be useful for extraction of intra-arterial thrombi in appropriately selected patients, but the utility of the device in improving outcomes is still unclear. (new recommendation)	III	C
Aspirin	Start aspirin within 48 hours of stroke onset.	I	A
	Use of aspirin within 24 hours of rt-PA is not recommended.	II-1	A
Anticoagulants	The use of heparins (unfractionated heparin, low molecular weight heparin or heparinoids) is not routinely recommended as it does not reduce the mortality in patients with acute ischaemic stroke.	I	A
Neuroprotective Agents	A large number of clinical trials testing a variety of neuroprotective agents have been completed. These trials have thus far produced negative results.	I	A
	To date, no agent with neuroprotective effects can be recommended for the treatment of patient with acute ischaemic stroke at this time.	I	A

AntiCoagulation following Acute Cardioembolic Stroke

Treatment	Recommendations	Level of Evidence	Grade
Aspirin	All patients should be commenced on aspirin within 48 hours of ischaemic stroke.	I	A
Warfarin	Adjusted-dose warfarin may be commenced within 2-4 days after the patient is both neurologically and medically stable.	II-2	C
Heparin (unfractionated)	Adjusted-dose unfractionated heparin may be started concurrently for patients at very high risk of embolism.	III	C
Anticoagulation	Anticoagulation may be delayed for 1-2 weeks if there has been substantial haemorrhage.	III	C
	Urgent routine anticoagulation with the goal of improving neurological outcomes or preventing early recurrent stroke is not recommended.	I	A
	Urgent anticoagulation is not recommended for treatment of patients with moderate-to-large cerebral infarcts because of a high risk of intracranial bleeding complications.	I	A

Stroke Unit

Treatment	Recommendations	Level of evidence	Grade
Stroke unit	Every hospital should be encouraged to set up a stroke unit.	I	A
	Stroke units significantly reduce death, dependency, institutionalisation and length of hospital stay.	I	A
	A stroke unit should be managed by a multidisciplinary stroke team.	I	A
	An efficient referral and rehabilitation network should be established to ensure the success of stroke units.	III	C

Cardiac conditions predisposing to Ischaemic stroke

Major Risk Conditions	Additional risk factors	Recommendation		Level of evidence	Grade
Atrial Fibrillation	Risk factors to be assessed by CHA ₂ DS ₂ -VASc Score. (Refer Appendix E) (new recommendation)	CHA ₂ DS ₂ -VASc score	Recommended antithrombotic therapy	I	A
		≥2	OAC ^a		
		1	Either OAC ^a or aspirin 75-325mg daily. Preferred: OAC rather than aspirin.		
		0	Either aspirin 75-325mg daily or no antithrombotic therapy. Preferred: no antithrombotic therapy rather than aspirin.		
		^a Oral Anticoagulant Aspirin 75-325mg daily is sufficient for patients < 65 years old with 'lone' AF and no additional risk factors. (new recommendation) Dabigatran etexilate is superior (150mg bid) and as effective (110mg bid) compared to warfarin, in preventing stroke and systemic embolism in non-valvular atrial fibrillation. (new recommendation) Bleeding rates are similar with warfarin for 150mg bid but lower bleeding rates for 110mg bid. * Dabigatran etexilate does not require routine INR monitoring. (new recommendation) Oral factor Xa inhibitors have also been shown to be at least as effective as VKA in their latest trials. However, at the time of writing, these agents are not yet licensed for stroke prevention in atrial fibrillation in Malaysia. (new recommendation)		I	A
		Dabigatran etexilate is superior (150mg bid) and as effective (110mg bid) compared to warfarin, in preventing stroke and systemic embolism in non-valvular atrial fibrillation. (new recommendation)		I	A
		Bleeding rates are similar with warfarin for 150mg bid but lower bleeding rates for 110mg bid. * Dabigatran etexilate does not require routine INR monitoring. (new recommendation)		I	A
Prosthetic Heart Valves (Mechanical)	<i>Moderate risk:</i> Bileaflet or tilting disk aortic valves in NSR	Life-long warfarin		II-2	B
	<i>High risk:</i> Bileaflet or tilting disk aortic valves in AF; Bileaflet or tilting disk mitral valve in AF or NSR.	Life-long warfarin (target INR 3.0; range 2.5-3.5)		II-3	B
	<i>Very high risk:</i> Caged-ball and caged-disk designs; documented stroke/TIA despite adequate therapy with warfarin.	Life-long warfarin (target INR 3.0; range 2.5-3.5) plus aspirin 75-150mg daily		II-1	B

Bioprosthetic heart valves	High risk: AF; left atrial thrombus at surgery; previous CVA/TIA or systemic embolism.	If high risk factors present, consider warfarin for 3-12 months or longer.	III	C
		For all other patients, give warfarin for 3 months post-op, then aspirin 75-150mg daily.	III	C
Mitral Stenosis	High risk: AF; previous stroke/TIA; left atrial thrombus; left atrial diameter > 55mm on echo.	If high risk factors present, consider long-term warfarin.	II-3	B
		For all other patients start aspirin 75-150mg daily.	II-2	B
MI and LV dysfunction	High risk: Acute/recent MI (<6 mos); extensive infarct with anterior wall involvement; previous stroke/TIA. Very high risk: Severe LV dysfunction (EF < 28%); LV aneurysm; spontaneous echo contrast; LV thrombus; dilated non-ischaemic cardiomyopathies.	If risk factors present without LV thrombus: consider warfarin for 3-6 months followed by aspirin 75-150mg daily.	III	C
		If LV thrombus is present, consider warfarin for 6-12 months.	III	C
		For dilated cardiomyopathies including peripartum, consider long-term warfarin.	III	C

Recommended warfarin dose INR target 2.5 [range 2.0 to 3.0] unless stated otherwise

Secondary Prevention

Factors Treatment	Recommendations	Level of evidence	Grade
Antiplatelets <u>Single agent</u>			
Aspirin	The recommended dose of aspirin is 75mg to 325mg daily.	I	A
<i>Alternatives:</i>			
Clopidogrel	The recommended dose is 75mg daily. or	I	A
Ticlopidine	The recommended dose is 250mg twice a day.	I	A
Trifusal	The recommended dose is 600mg daily. (new recommendation)	I	A
Cilostazol	The recommended dose is 100mg twice a day. (new recommendation)	I	A

Double Therapy	Combination therapy of clopidogrel and aspirin is not superior to clopidogrel or aspirin alone; but with higher bleeding complication. (new recommendation)	I	A
<i>Anti-hypertensive treatment</i>	ACE-inhibitor based therapy should be used to reduce recurrent stroke in normotensive and hypertensive patients.	I	A
	ARB-based therapy may benefit selected high risk populations.	II-1	B
<i>Lipid lowering</i>	Lipid reduction should be considered in all subjects with previous ischaemic strokes.	I	A
<i>Glycaemic control</i>	All diabetic patients with a previous stroke should have good glycaemic control.	III	C
<i>Cigarette smoking</i>	All smokers should stop smoking	III	C

Endarterectomy, Angioplasty & Stenting

Treatment	Recommendations	Level of evidence	Grade
Carotid Endarterectomy (CEA)	Indicated for most patients with stenosis of 70-99% after a recent ischaemic event in centres with complication rates of less than 6%.	I	A
	Earlier intervention (within 2 weeks) is more beneficial.	II-1	B
	May be indicated for patients with stenosis of 50-69% after a recent ischaemic event in centres with complication rates of less than 6%.	III	C
	CEA is not recommended for patients with stenosis of less than 50%.	I	A
	Patients should remain on antithrombotic therapy before and after surgery.	II-2	B
Carotid angioplasty & stenting (CAS)	CAS represents a feasible alternative to carotid endarterectomy for secondary stroke prevention when surgery is undesirable, technically difficult or inaccessible.	II-2	B
	Distal protection devices should be used during the procedure and anti-platelet agents such as clopidogrel be initiated.	I	A
	The long-term safety and efficacy of CAS is not known.	III	C
Intracranial angioplasty & stenting (IAS)	Role of IAS in intra-cranial stenoses, asymptomatic stenoses and acute stroke is unclear and not recommended.	II-2	C

Stroke in Special Circumstances

Treatment	Recommendations	Level of evidence	Grade
Aspirin	Young Ischaemic stroke If the cause is not identified, aspirin is usually given. There are currently no guidelines on the appropriate duration of treatment.	III	C
Heparin	Cerebral Venous thrombosis Anticoagulation appears to be safe, and cerebral haemorrhage is not a contra-indication for anticoagulation.	II-I	B
Warfarin	Simultaneous oral warfarin should be commenced. The appropriate length of treatment is unknown.	III	C
Endovascular thrombolysis	It is currently considered for patients with extensive disease and clinical deterioration.	III	C

ABBREVIATIONS

AF: atrial fibrillation
ASA: atrial septal aneurysm
CAS: carotid angioplasty and stenting
CEA: carotid endarterectomy
CVA: cerebrovascular accident
EF: ejection fraction
IAS: intracranial angioplasty and stenting
ICP: intracranial pressure
LV: left ventricle
NSR: normal sinus rhythm
MI: myocardial infarction
PEG: percutaneous endoscopic gastrostomy
PFO: patent foramen ovale
TIA: transient ischaemic attack

TABLE OF CONTENTS

<i>STATEMENT OF INTENT & REVIEW OF GUIDELINES</i>	<i>I</i>
<i>CLINICAL PRACTICE GUIDELINES DEVELOPMENT GROUP</i>	<i>II</i>
<i>RATIONALE AND PROCESS OF GUIDELINE DEVELOPMENT</i>	<i>III</i>
<i>OBJECTIVES, QUESTIONS AND TARGETS</i>	<i>III-IV</i>
<i>KEY TO EVIDENCE STATEMENTS AND GRADES OF RECOMMENDATIONS</i>	<i>IV</i>
<i>SUMMARY OF RECOMMENDATIONS</i>	<i>V-XII</i>
<i>ABBREVIATIONS</i>	<i>XII</i>
<i>TABLE OF CONTENTS</i>	<i>XIII</i>

1. INTRODUCTION & EPIDEMIOLOGY	1
2. DEFINITION & CLASSIFICATION	1
3. DIAGNOSIS	2
4. PROGNOSIS	3
5. CAUSE AND PATHOPHYSIOLOGY	4
6. INVESTIGATIONS	5
7. ACUTE TREATMENT	7
General Management	7
Reperfusion of Ischaemic Brain	10
Stroke Unit	12
8. PREVENTION	13
Primary	13
Secondary	16
9. CARDIOEMBOLISM	19
10. REVASCULARISATION PROCEDURES	23
Primary Prevention	23
Secondary Prevention	24
Angioplasty or Stenting	24
11. STROKE IN SPECIAL CIRCUMSTANCES	26
Young Stroke	26
Stroke in Pregnancy	28
12. IMPLEMENTING THE GUIDELINES	29
13. CONCLUSION	30
14. REFERENCES	31-35
15. APPENDIX	36
A. OCSF Classification	36
B. Stroke Pathophysiology Algorithm	37
C. Management of Suspected Stroke/TIA Algorithm	38
D. Therapeutic Agents Available in Malaysia	39
E. CHA ₂ DS ₂ -VAS Score	40
F. Swallowing Test	41
G. Resources - Societies & Associations	42
H. 9 KPI Recommended by Stroke Council Malaysian Society	43
I. National Institutes of Health Stroke Scale (NIHSS)	44
J. Modified Rankin Scale	45
Acknowledgements	46

1 – INTRODUCTION & EPIDEMIOLOGY

Stroke is a global health problem and is the second commonest cause of death and a leading cause of adult disability worldwide.¹ Annually 15 million people worldwide suffer a stroke. Of these, 5 million die and another 5 million are left permanently disabled.² It is presently among the top four leading causes of death in ASEAN countries, with the crude death rate ranging from 10.9/100 000 (Thailand) to 54.2 per 100 000 (Singapore).³

Ministry of Health statistics show stroke consistently as one of the top five leading cause of death since 2000's. Data in 2009 show cerebrovascular disease causing a mortality of 8.43 per 100 000 population (see table 1).⁴ There is no incidence or prevalence data available for the country.

Table 1: Top 5 Mortality rate in MOH hospitals 2009⁴

Mortality (rate per 100 000 population)	
1. Heart Diseases and Diseases of Pulmonary Circulation	16.09
2. Septicaemia	13.82
3. Malignant neoplasm	10.85
4. Pneumonia	10.38
5. Cerebrovascular Diseases	8.43

Stroke mortality rates vary across the globe, with a ten-fold difference in age-adjusted mortality rates and Disability Adjusted Living Years (DALYs) lost between the highest and lowest ranked countries. National income was a particular strong predictor of stroke burden and mortality. Mortality rates were 3.5 fold higher in low-income countries than in middle-income countries.⁵

Atherothromboembolism is the major cause of ischaemic stroke worldwide but there are interethnic differences in stroke mortality and subtype. Small vessel infarction (lacunar infarcts) were more commonly seen among Asians when compared to Caucasians in one study.⁶ There is also possible variation in stroke types among Chinese with a higher proportion of haemorrhagic strokes and studies also highlight the importance of intracranial arterial stenosis as a cause of stroke among Chinese.⁷ There is a greater predominance of intracranial atherosclerotic vascular disease compared to extracranial or carotid artery disease in Asians.⁸

2 – DEFINITION & CLASSIFICATION OF STROKE

Definition of Stroke

"Stroke is a clinical syndrome characterized by rapidly developing clinical symptoms and/or signs of focal, and at times global, loss of cerebral function, with symptoms lasting more than 24 hours or leading to death, with no apparent cause other than that of vascular origin".

Definition of Transient Ischaemic Attack (TIA)

"A Clinical syndrome characterized by an acute loss of focal cerebral or monocular function with symptoms lasting less than 24 hours and which is thought to be due to inadequate cerebral or ocular blood supply as a result of arterial thrombosis or embolism".

Why classify stroke?

Classification of stroke has numerous implications during immediate stroke supportive care and rehabilitation, for prognostic purposes, guides cost effective investigations for underlying cause

as well as aids decisions for therapy and secondary stroke prevention strategies. Furthermore, classifications are useful in setting up stroke registries and data banks as well as for epidemiological studies.

Oxfordshire Community Stroke Project (OCSP) is a handy clinical classification to use (refer to appendix A).

3 – DIAGNOSIS

In general, the diagnosis of stroke is made by evaluating and analysing information derived from a good history, physical examination and supplemented with selected diagnostic tests. Because of the nature of the illness and the dramatic manner of the neurological deficits, history is of utmost importance. Every effort must be made to obtain information from the patient, family members, friends, or witnesses.

The diagnosis should provide answers to the following questions:

1. What is the neurological deficit?
2. Where is the lesion?
3. What is the lesion?
4. Why has the lesion occurred?
5. What are the potential complications and prognosis?

The signs and symptoms of a stroke depend on the type, location and the extent of the affected brain tissue. Stroke patients usually have a sudden or rapid onset of focal neurological symptoms, within minutes to an hour. Some patients may, however, have a stepwise or gradual worsening or waxing and waning symptoms. A third of all strokes occur during night sleep, therefore, the weakness is first noted on waking up in the morning.

A full neurological examination, including the patient's conscious level and tests of higher mental function (such as the mini-mental state examination) is mandatory. Every positive and negative finding should point to the site of the lesion. These can be divided into 2 broad groups: a) clinical features that are caused by anterior circulation stroke (carotid artery), and b) those caused by posterior circulation stroke (vertebrobasilar system) (see table 1).

Table 1. Clinical Features of Stroke

Anterior (carotid) artery circulation

Middle cerebral artery

- Aphasia (dominant hemisphere)
- Hemiparesis / plegia
- Hemisensory loss/disturbance
- Homonymous hemianopia
- Parietal lobe dysfunction, e.g. astereognosis, agraphesthesia, impaired two-point discrimination, sensory and visual inattention, left-right dissociation and acalculia

Anterior cerebral artery

- Weakness of lower limb more than upper limb

Posterior (vertebrobasilar) artery circulation

- Homonymous hemianopia
- Cortical blindness
- Ataxia
- Dizziness or vertigo
- Dysarthria
- Diplopia
- Dysphagia
- Horner's syndrome
- Hemiparesis or hemisensory loss contralateral to the cranial nerves palsy
- Cerebellar signs

Table 2. Differential diagnosis of stroke

Differential diagnosis of stroke ¹
<ul style="list-style-type: none">• Metabolic/toxic encephalopathy (hypoglycaemia, non-ketotic hyperglycaemia, Wernicke-Korsakoff syndrome, drug intoxication)• Epileptic seizures (postictal Todd's paresis)• Hemiplegic migraine• Structural intracranial lesions (e.g. subdural haematoma, brain tumour, arteriovenous malformation)• Encephalitis (e.g. herpes simplex virus), brain abscess, tuberculoma• Head injury• Hypertensive encephalopathy• Relapsing Multiple Sclerosis• Conversion disorders• Hyperviscosity syndrome• Peripheral nerve lesions (e.g. Guillain-Barre Syndrome)

4 – PROGNOSIS

Prognosis of stroke depends on the stroke type, size and location. Haemorrhagic stroke has a higher mortality than ischaemic stroke.¹⁻⁴ However patients with haemorrhagic stroke show a better neurological and functional recovery.⁵ Brainstem infarct, large hemispheric infarct and cardio embolic stroke also carry a poor prognosis.⁶ Lacunar infarct has the lowest mortality rate.⁷

Survival after stroke

There is a decline in stroke mortality in both men and women suffering from ischaemic or haemorrhagic stroke at all ages in many countries over the past few decades.^{8,9} This can be attributed to the introduction of stroke units which provide organized stroke care and a better control of stroke risk factors resulting in milder stroke.¹⁰⁻¹⁵

A patient who survives the first 30 days after a first-ever stroke has an annual death risk of 9-10%.^{16,17} Studies in recent years showed that case fatality rates after a first-ever stroke (all types combined) were 10% at one week, 20% at one month, 30% at one year, 60% at 5 years^{16,17} and 76% at 10 years.¹⁸

In a local study published in 2003, the in-hospital mortality in ischaemic stroke was 11% while for haemorrhagic stroke is much higher, at 27.3%.¹⁹

Death occurring within the first 30 days after stroke is commonly due to the direct effect of brain damage.⁴ Thereafter, mortality is usually caused by complications of immobilisation (bronchopneumonia, deep vein thrombosis), recurrent stroke and coronary heart disease.¹⁶

Risk factors for stroke mortality

Previous use of antiplatelet drugs nearly halves the risk of early death in patient with ischaemic stroke while old age, atrial fibrillation, ischaemic heart disease and diabetes mellitus increase the risk of early death.⁶

Diabetes mellitus, both diastolic and systolic hypertension, smoking, increased cardiothoracic ratio, pre-existing coronary heart disease are risk factors for long term stroke mortality.²⁰

Recurrent stroke

The recurrent rates are 4% in the first month and 12% in the first year. Thereafter the risk falls to about 4-5% per year, so that by 5 years, 30% will have suffered a recurrent stroke.^{21, 22}

Disability

After a first-ever stroke, about 60% of the patients are alive at 5 years.¹⁸ One-third of stroke survivors exhibit some form of persistent disability after initial stroke episode. Up to 58% patients with stroke who survive the first stroke regains independence in activities in daily living, with most functional recovery occurs within the first 2 months of stroke. Less functional recovery is observed during the next 4 to 5 months after stroke. Improvement in functional recovery is less than certain after 6 months, however known predictors of disability are older age, a very low premorbid level of activities before the stroke and subsequent recurrent stroke.²⁴

5 – CAUSE & PATHOPHYSIOLOGY

Three main causes of ischaemic stroke are:

1. Atherothromboembolism (50%)
2. Intracranial small vessel disease (penetrating artery disease) (25%)
3. Cardiogenic embolism (20%)

Other causes include arterial dissection, trauma, vasculitis (primary/secondary), metabolic disorders, congenital disorders and other less common causes such as migraine, pregnancy, oral contraceptives, etc.

Atheroma affects mainly the large and medium sized arteries at places of confluence, branching or tortuosity of vessels. The process begins in childhood as fatty streaks and progresses over years with gradual buildup of fibrolipid plaque and infiltration of inflammatory cells, eventually narrowing the vessel lumen. The final step occurs with ulceration and platelet-fibrin thrombus formation on the plaque surface.

The atherothrombotic plaque can grow to obstruct a vessel, with intraluminal propagation of the thrombus proximally or distally to cause occlusion, or embolism occurs from the plaque surface to occlude smaller distant vessel(s).

Intracranial small vessel disease is thought to be due to lipohyalinosis but other causes may include microatheroma and angioneurosis, or thromboembolism from a larger artery. The clinical syndrome caused by this is lacunar infarction due to occlusion of small perforating arteries.

Vascular risk factors associated with increased risk of stroke:

NON-MODIFIABLE	MODIFIABLE
Age	High Blood Pressure (systolic and diastolic)
Sex	Cigarette smoking
Ethnicity / Race	Diabetes mellitus
Family history of stroke	Atrial Fibrillation Coronary heart disease Hyperlipidaemia
	Obesity & physical inactivity
	Raised Homocysteine levels
	High dietary salt intake
	Heavy alcohol consumption
	Previous stroke

Embolism from the heart causes approximately 20% of all ischaemic strokes. The most common causes are atrial fibrillation and valvular heart disease. Not all cardiac sources pose similar threat in causing stroke.

The algorithm in appendix b outlines the steps to a diagnosis of ischaemic stroke and the various causes which need investigation to identify the underlying cause for the stroke. Despite thorough investigations, in up to 40% of strokes no definite cause can be found, especially in young stroke patients.

6 - INVESTIGATIONS

The following investigations for patients with ischaemic stroke are recommended in order to achieve the following objectives:-

1. Confirm the diagnosis
2. Determine the stroke mechanism
3. Risk stratification and prognostication
4. Identify potentially treatable large obstructive lesions of the cerebrovascular circulation

Blood investigations

ON ADMISSION	
Full blood count	Exclude anaemia, polycythaemia, thrombocytosis, thrombocytopenia, etc
Random blood glucose	Exclude hypoglycemia, new diagnosis of diabetes mellitus
Urea & electrolytes	Hydration status, excludes electrolyte imbalances
Clotting profile*	Baseline
NEXT DAY	
Lipid profile (fasting)	
Glucose (fasting)	
OPTIONAL TESTS (in selected patients)	
VDRL	
autoimmune screen	ESR, antinuclear Factor, Rheumatoid Factor, anti double stranded DNA antibodies, C3 C4 levels, etc
Thrombophilia screen & lupus anticoagulant	Serum fibrinogen, Anti-thrombin III, Protein C, Protein S, Factor V-Leiden, anti-phospholipid antibodies
Homocysteine (fasting)	
C reactive protein	

*if thrombolysis is considered

Other investigations

12 lead ECG	Mandatory
Ambulatory ECG	For suspected arrhythmias or sinoatrial node disease

Imaging

For all suspected stroke	
Chest x-ray	Mandatory
CT brain	The emergency neuroimaging scan of choice for all patients Differentiates haemorrhage from infarction Confirms site of lesion, cause of lesion, extent of brain affected
In selected patients	
ECHO cardiography	For suspected cardioembolism, assess cardiac function
MRI (magnetic resonance imaging)	Sensitive Not available in emergency setting, limited by expense Useful tool to select patients for thrombolysis where available
Carotid duplex Ultrasound	Allows identification of extracranial vessel disease
Transcranial Doppler Ultrasound	Identifies intracranial vessel disease with prognostic and therapeutic implications
MR angiography (MRA)	Non invasive tool to assess intra- and extra-cerebral circulation Objective assessment of vessel stenosis
CT angiography (multislice CT scan)	Non invasive tool to assess intra- and extra-cerebral circulation. Involves intravenous contrast injection
MR venography	In suspected cerebral venous thrombosis
Contrast angiogram	Gold standard assessment of cerebral vasculature Reserved for patients planned for intervention

7 –ACUTE TREATMENT

GENERAL MANAGEMENT

The general management of acute stroke includes supportive care and treatment of acute complications. This is important to improve mortality and functional disability.

Oxygen and Airway Support

Adequate tissue oxygenation is imperative to prevent hypoxia and potential worsening of the neurological injury.¹⁻⁵ (Level II-3 to III)

Observation

Regular observation is mandatory to recognise impaired pulmonary function (pulse oxymeter), circulatory function (pulse rate, blood pressure), NIHSS, Head Chart, GCS and to recognise complications from mass effect.¹ (new recommendation) (Level III)

Mobilisation

Most patients are first treated with bed rest, but mobilisation should begin as soon as the patient's condition is judged to be stable.⁶⁻⁹ Mobilisation of acute stroke patients, in bed and out of bed as early as possible is currently recommended to prevent general and neurological complications. Helping patients to get out of bed very early is recommended, with other mobilization exercise including passive and full-range of motion exercise, transfer from bed to chair, balance and trunk support are done in stages. It is however unclear whether very early mobilization (within 48hours) independently improves outcome although no significant harms were identified.^{8,9} (new recommendation) (Level II-3)

Blood Pressure

Hypertension following stroke is quite common. However, its optimal management has not been established.^{1,10-12} (Level II-3 to III)

Very high blood pressure should be reduced gradually.

Proposed drugs: Labetolol 10-20mg boluses at 10 minute intervals up to 150-300mg or 1mg/ml infusion, at the rate of infusion for labetalol as 1-3mg/min or Captopril. Sublingual use of a calcium antagonist, such as nifedipine, should be avoided because of rapid decline in blood pressure.¹² (Level II-3)

Blood Glucose

Hyperglycaemia following acute stroke is strongly associated with subsequent mortality and impaired neurological recovery. This applies to diabetics and non-diabetics.^{13, 14} (Level II-3)

Nutrition

Sustaining nutrition is important as malnutrition after a stroke might interfere with recovery.¹⁵ Persons with infarctions of the brain stem, multiple strokes, large hemispheric lesions, or depressed consciousness are at the greatest risk for aspiration. Swallowing impairments are associated with an increased mortality. Early initiation of percutaneous placement of an endogastric (PEG) tube feeding has not been shown to improve long-term outcome.¹⁶

A water swallow test (refer to Appendix F) should be performed before the patient is allowed to eat or drink. A wet voice after swallowing, incomplete oral-labial closure, or coughing reflex on swallowing indicates high risk of developing aspiration. A videofluoroscopic modified barium swallow examination can be performed later if indicated.^{1,17} (Level III)

If the patient fails the swallowing test, a nasogastric tube should be inserted to prevent aspiration. (PEG) tube is superior to nasogastric tube feeding if a prolonged need for devices is anticipated.¹⁸ (level II-1)

Infection

Infection is the commonest complication after an acute stroke especially pneumonia and urinary tract infection.¹⁹

The appearance of fever should prompt a search for infection and appropriate antibiotic therapy should be administered early.¹⁹ Bladder catheters should be avoided if possible¹ (Level III)

Fever

A meta-analysis suggested that fever after stroke onset is associated with marked increase in mortality and morbidity.²⁰ Anti-pyretics should be used to control elevated temperatures in acute stroke patients.^{20, 21} (Level II-1)

Raised Intracranial Pressure

Cerebral oedema and increased intracranial pressure largely occur with large cerebral infarctions. The head of the bed can be elevated by 20 to 30 degrees in an attempt to help venous drainage. Hyperventilation is an emergency measure that acts almost immediately; a reduction of the PCO₂ by 5 to 10mmHg can lower intracranial pressure by 25% to 30%.^{1,22} (Level II-2)

Mannitol (0.25 to 0.5g/kg) intravenously administered over 20 minutes lowers intracranial pressure and can be given every 6 hours.²³ The usual maximum daily dose is 2 g/kg. (Level II-2)

If hydrocephalus is present, drainage of cerebrospinal fluid via an intraventricular catheter can rapidly lower intracranial pressure.¹ (Level III)

Hemicraniectomy and surgical decompressive therapy with 48 hours after symptoms onset is recommended to control intracranial pressure and prevent herniation among those patients with very large infarctions of the cerebral hemisphere.²⁴⁻²⁶ (Level I-1)

Ventriculostomy and suboccipital craniectomy is effective in relieving hydrocephalus and brain stem compression caused by large cerebellar infarctions.^{27,28} (Level II-2)

Recommendation:

Factors	Recommendation	Level of evidence	Grade
Airway & Breathing	Ensure clear airway and adequate oxygenation. Elective intubation may help some patients with severely increased ICP.	III	C
Mobilization	Mobilize early to prevent complications.	II-3	C
Blood Pressure	Do not treat hypertension if < 220mmHg systolic or < 120mmHg diastolic. Mild hypertension is desirable at 160-180/90-100 mmHg. Blood pressure reduction should not be drastic. Proposed substances: Labetolol 10-20mg boluses at 10 minute intervals up to 150-300mg or 1mg/ml infusion, rate of infusion for labetolol as 1-3mg/min or Captopril 6.25-12.5mg orally.	III III	C C

Blood Glucose	Treat hyperglycaemia (Random blood glucose >11mmol/l) with insulin.	II-3	C
	Treat hypoglycaemia (Random blood glucose < 3 mmol/l) with glucose infusion.	III	C
Nutrition	Perform a water swallow test.	III	C
	Insert a nasogastric tube if the patient fails the swallow test.	III	C
	PEG is superior to nasogastric feeding only if prolonged enteral feeding is required.	II-1	B
Infection	Search for infection if fever appears and treat with appropriate antibiotics early.	III	C
Fever	Use anti-pyretics to control elevated temperatures.	II-1	B
Raised Intracranial Pressure	Hyperventilate to lower intracranial pressure.	II-2	B
	Mannitol (0.25 to 0.5g/kg) intravenously administered over 20 minutes lowers intracranial pressure and can be given every 6 hours.	II-2	B
	If hydrocephalus is present, drainage of cerebrospinal fluid via an intraventricular catheter can rapidly lower intracranial pressure.	III	C
	Hemicraniectomy and surgical decompressive therapy with 48 hours after symptoms onset is recommended to control intracranial pressure and prevent herniation among those patients with very large infarctions of the cerebral hemisphere.	II-3	C
	Ventriculostomy and suboccipital craniectomy is effective in relieving hydrocephalus and brain stem compression caused by large cerebellar infarctions.	II-3	C

REPERFUSION OF ISCHAEMIC BRAIN

In cerebral infarcts, restoration of perfusion to the ischaemic brain tissue is a key therapeutic strategy. The concept of the existence of an ischaemic penumbra is fundamental to the current approach to treatment of ischaemic stroke: although a core of infarct tissue might not be salvageable, adjacent dysfunctional tissue might be saved if the circulation is restored and metabolism is normalized.

Intravenous Thrombolysis With rt-PA

Intravenous rt-PA (0.9mg/kg, maximum 90mg), with 10% of the dose given as a bolus followed by a 60-minute infusion, is recommended within 4.5 hours of onset of ischaemic stroke.^{5,7} (new recommendation) (Level 1, Grade A)

The use of streptokinase is contraindicated in acute ischaemic stroke due to poor clinical outcome.⁶ (Level 1, Grade A)

Intravenous rt-PA can be given only if the following is available:

1. A physician with expertise in the diagnosis and management of stroke.
2. Appropriate neuroimaging tests are available 24 hours a day
3. Capability to manage the complications of thrombolysis, particularly intracranial haemorrhage.

Characteristics of Patients With Ischaemic Stroke Who Could Be Treated With rt-PA

1. Diagnosis of ischaemic stroke causing measurable neurological deficit.
2. The neurological signs should not be clearing spontaneously.
3. The neurological signs should not be minor and isolated.
4. Caution should be exercised in treating a patient with major deficits.
5. Onset of symptoms <4.5 hours before beginning treatment.
6. No contraindication for thrombolytic therapy.
7. Blood pressure less than 185mm Hg systolic and/or less than 110mm Hg diastolic.
8. Brain CT is normal or minimal change.
9. The patient or family understand the potential risks and benefits from treatment.

Contraindications for intravenous thrombolytic therapy

1. Current use of oral anticoagulant or a prothrombin time (PT) > 15 seconds (INR > 1.7)
2. Use of heparin in the previous 48 hours and a prolonged partial thromboplastin time (PTT)
3. A platelet count < 100,000/mm³
4. Another stroke or any serious head injury in the previous 3 months
5. Major surgery within the preceding 14 days
6. Arterial puncture at noncompressible site within the last 21 days
7. Pre-treatment systolic blood pressure > 185mmHg or diastolic blood pressure > 110mmHg
8. Neurological signs that are improving rapidly
9. Isolated mild neurological deficits, such as ataxia alone, sensory loss alone, dysarthria alone or minimal weakness
10. Prior intracranial haemorrhage
11. A blood glucose < 2.7mmol/l or > 22.2mmol/l
12. Seizure at the onset of stroke
13. Gastrointestinal or urinary bleeding within the preceding 24 days
14. Recent myocardial infarction

Old age is not a contraindication but it is not wise to use it in patients above 75 years old. Caution is advised before giving intravenous rt-PA to persons with severe stroke.

Regimen for Treatment of Acute Ischaemic Stroke with Intravenous rtPA

1. Infuse 0.9mg/kg maximum of 90 mg over 60 minutes with 10% of the dose given as a bolus dose over 1 minute.
2. Admit the patient to an intensive care unit or a stroke unit for monitoring.
3. Perform neurological assessments every 15 minutes during the infusion of rt-PA and every 30 minutes for the next 6 hours and then every hour until 24 hours from treatment.
4. If the patient develops severe headache, acute hypertension, nausea or vomiting discontinue the infusion if agent is still being administered and obtain a CT scan of brain.
5. Measure blood pressure every 15 minutes for the first 2 hours, every 30 minutes for the next 6 hours and then every hour until 24 hours from treatment.
6. Increase blood pressure measurements if a systolic blood pressure >180mmHg or diastolic blood pressure >105mmHg is recorded. Administer anti-hypertensive medications to maintain blood pressure at or below these levels.
7. Delay placement of nasogastric tubes, indwelling bladder catheters or intra-arterial pressure catheters.
8. Avoid antiplatelet drugs for the first 24 hours after administration of rt-PA.

Management of Bleeding Complications

Haemorrhagic transformation should be considered as a cause of neurological deterioration following the use of a thrombolytic agent. If an urgent brain CT confirms a haemorrhage, stop the rt-PA infusion. Obtain blood samples for coagulation tests, infuse fresh frozen plasma and cryoprecipitate, and seek immediate neurosurgical opinion.

Intra-arterial thrombolysis (new recommendation)

Intra-arterial thrombolysis is an option for the treatment of selected patients who have major stroke of <6 hours' duration due to occlusions of the middle cerebral artery, internal carotid and carotid terminus who are not otherwise candidates for intravenous rtPA.¹⁻³

Level II-2, Grade C

Intra-arterial thrombolysis should be considered only if the following is available:

1. A physician with expertise in the diagnosis and management of stroke.
2. A physician with expertise and experience managing Intravenous rt-PA cases.
3. Appropriate neuroimaging tests including perfusion and angiography are available 24 hours a day.
4. Interventional Neuroradiologist or qualified physician with experience of endovascular intracranial work.
5. Capability to manage the complications of thrombolysis, particularly intracranial haemorrhage as in intravenous thrombolytic therapy.

Endovascular mechanical thrombectomy (new recommendation)

Endovascular mechanical thrombectomy uses MERCI device or other mechanical devices, endovascularly, to disrupt the clot and restore cerebral blood flow. It may be performed up to <8 hours' duration in selected patients with major stroke syndrome and ineligible for or failing intravenous thrombolysis (4-7). However, **the utility of the device in improving outcomes after stroke is unclear.**

Level III, Grade C

Endovascular mechanical thrombectomy should be considered only if the following is available:

1. A physician with expertise in the diagnosis and management of stroke.
2. A physician with expertise and experience managing Intravenous rt-PA cases.
3. Appropriate neuroimaging tests including perfusion and angiography are available 24 hours a day.
4. Interventional Neuroradiologist or qualified physician with experience of endovascular intracranial work.
5. Interventional Neuroradiologist or qualified physician familiar to handle endovascular mechanical thrombectomy devices.
6. Capability to manage the complications of thrombolysis, particularly intracranial haemorrhage as in intravenous thrombolytic therapy.

Recommendations

Treatment	Recommendations	Level of evidence	Grade
rt-Pa	Intravenous rt-PA (0.9mg/kg, maximum 90mg), with 10% of the dose given as a bolus followed by a 60-minute infusion, is recommended within 4.5 hours of onset of ischaemic stroke. ^{5,7}	I	A
Aspirin	Start aspirin within 48 hours of stroke onset.	I	A
	Use of aspirin within 24 hours of rt-PA is not recommended.	II-1	A
Anticoagulants	The use of heparins (unfractionated heparin, low molecular weight heparin or heparinoids) is not routinely recommended as it does not reduce the mortality in patients with acute ischaemic stroke.	I	A
Neuroprotective Agents	A large number of clinical trials testing a variety of neuroprotective agents have been completed. These trials have thus far produced negative results.	I	A
	To date, no agent with neuroprotective effects can be recommended for the treatment of patient with acute ischaemic stroke at this time.	I	A

STROKE UNIT

All patients with acute stroke should ideally have access to stroke units. There is clear evidence that treatment of patients with stroke in stroke units significantly reduces death, dependency, institutionalisation and length of hospital stay compared to treatment in a general medical ward.¹⁻⁷
(Level I)

This benefit is independent of patients' age, sex, co morbidity and stroke severity.^{1,8} (Level I)

A stroke unit is a dedicated unit in the hospital exclusively managing stroke patients. A team of specially trained staff provides coordinated multidisciplinary care throughout 24 hours to patients on a stroke unit. The core disciplines of the stroke team are: medical (neurologist, geriatrician or general physicians with interest in stroke), medical rehabilitation physician, pharmacist, nursing, physiotherapy, occupational therapy and speech therapy. In bigger centres, it may include neurosurgeon, social worker and dietitian. Effectiveness of a stroke unit is not necessarily related to a certain medical specialty. A stroke unit runs by general physician, geriatrician, neurologist or specialist in rehabilitation medicine may be equally effective.¹
(new recommendation)
(Level I)

Stroke units are available in several categories:

- (1) The acute stroke unit which accepts patients acutely but discharged patients early, usually within 1 week.
- (2) The combined acute and rehabilitation stroke unit admitting patients acutely but also provide rehabilitation for several weeks.
- (3) The rehabilitation stroke unit which accepts patients after a delay of 1 or 2 weeks and focuses on rehabilitation for several weeks or months if necessary.

Of these, only the combined acute and rehabilitation stroke unit, and the rehabilitation stroke unit have proven effectiveness in terms of reduced mortality and handicap.¹ (Level I)

Possible reasons for stroke unit benefits include early acute treatment, reduced incidence of infection and systemic complications as well as early and more intense rehabilitation.⁹ (Level I)

Stroke unit can only work optimally if a well-established referral and rehabilitation network is available. This also includes co-operation with primary care physician in primary and secondary stroke prevention.

9 KPI is the measurement index for effectiveness of a stroke unit. (Refer to Appendix H and I) (new recommendation)

Recommendation:

Treatment	Recommendations	Level of evidence	Grade
Stroke unit	Every hospital should set up a stroke unit.	I	A
	Stroke units significantly reduces death, dependency, institutionalisation and length of hospital stay.	I	A
	A stroke unit should be managed by a multidisciplinary stroke team.	I	A
	An efficient referral and rehabilitation network should be established to ensure the success of stroke units.	III	C

8 –PREVENTION

PRIMARY PREVENTION

Primary prevention is the key factor in any plan to reduce the incidence of stroke. This should be targeted to the whole population as well as high-risk groups by increasing awareness and promoting healthy lifestyles to reduce risk factors for stroke. The strategies should be integrated in the overall programme of health promotion for vascular diseases.

Although the following factors are non-modifiable, they identify individuals at highest risk of stroke and those who may benefit from rigorous prevention or treatment of modifiable risk factors.

Age: The cumulative effects of aging on the cardiovascular system and the progressive nature of stroke risk factors over a prolonged period of time age substantially increase stroke risk. The risk of stroke doubles in each successive decade after 55 years of.^{1,2}

Sex: Stroke is more prevalent in men than women.¹ Overall, men also have higher age-specific stroke incidence rates than women.³ Exceptions are in 35 to 44 year-olds and in those over 85 years of age in whom women have slightly greater age-specific incidence than men.³

Circumstances such as oral contraceptive use and pregnancy uniquely contribute to the risk of stroke in women.⁴⁻⁶

Family History: Both paternal and maternal history of stroke may be associated with increased risk. This may be mediated through genetic and shared environmental factors.^{7,8}

Medical Therapy

Aspirin

Aspirin may benefit women above the age of 65 in the primary prevention of stroke.⁹ (Level II-I)

Recommendation:

100mg aspirin every other day may be useful in women above the age of 65.

Hypertension

Hypertension is a major risk factor for both cerebral infarction and intracerebral haemorrhage.¹⁰ The incidence of stroke increases in proportion to both systolic and diastolic blood pressures. Isolated systolic hypertension is an important risk factor for stroke in the elderly (systolic blood pressure >140mmHg and diastolic blood pressure <90mmHg).³⁴

Large randomized controlled trials and meta-analyses have confirmed that reduction in blood pressure reduces stroke incidence.¹²⁻¹⁵ (Level I)

Lowering the systolic blood pressure by 10mmHg is associated with a reduction in risk of stroke by about a third, irrespective of baseline blood pressure levels.²⁹ (Level I)

Combination therapy is more likely to achieve target blood pressures.

Recent published studies suggest that certain classes of anti-hypertensives may have additional benefits above and beyond lowering of blood pressure^{30,31} but no definite recommendations can be made. (Level I)

Hypertension in the very elderly should be treated to reduce the risk of stroke, with reduction of stroke risk in elderly with hypertension, isolated hypertension and previous stroke.³² (Level I)

Smoking

All forms of smoking, both active and passive is a major risk factor for stroke.¹⁸ Smokers who stopped for more than 5 years have the same risk as non-smokers.¹⁹ (Level III)

Alcohol

Heavy alcohol drinking, more than 3 units/day (1unit = 1glass wine = 1 pack of hard liquor), increases the risk of stroke while light or moderate alcohol intake is protective against all strokes.²⁰ (Level II-2)

Post menopausal Hormone Replacement therapy

Stroke rates rapidly rise in women once they become menopausal. The Nurses' Health Study (6-year follow-up of 59,337 postmenopausal women) showed only a weak association between stroke and oestrogen replacement. However, the Women's Health Initiative Estrogen Plus.

Progestin Study (E+P Study) showed a 31% increase in the risk of stroke due to E + P.²¹
(Level I)

Diabetes

Case-control studies of stroke patients and prospective epidemiological studies have confirmed an independent effect of diabetes on ischaemic stroke, with an increased relative risk in diabetics ranging from 1.8- to nearly 6-fold.²²
(Level II-2)

Tight control of hypertension in diabetics significantly reduced stroke incidence.²³ (Level I)

Tight glycemic control (Hb A1c < 6%) is important and supported by epidemiology and a meta-analysis.²⁴
(Level II-2)

Asymptomatic Carotid Stenosis

See Revascularization Procedures

Atrial fibrillation

See CardioEmbolism & Stroke

Hyperlipidaemia

Recent epidemiological studies have shown an association between raised serum lipids and risk of ischaemic stroke.²⁵⁻²⁶

In the high risk group, (those with cardiovascular disease, occlusive arterial disease or diabetes) statin therapy reduces the incidence of coronary events and ischaemic strokes even amongst individuals with normal cholesterol concentrations.^{27, 28}
(Level I)

Well-Documented Modifiable Risk Factors.

Factors	Recommendation	Level of evidence	Grade
Hypertension	Treat medically if BP>140mmHg systolic and/or >90mmHg diastolic. ¹⁸	I	A
	Lifestyle changes if BP between 130-139mmHg systolic and/or 80-89mmHg diastolic.	I	A
	Target BP for diabetics is <130mmHg systolic and <80mmHg diastolic. ¹⁸	I	A
	Hypertension should be treated in the very elderly (age > 70 yrs) to reduce risk of stroke. ³⁴	I	A
Diabetes mellitus	Strict blood pressure control is important in diabetics. ²³ Maintain tight glycaemic control. ²⁴	I	A
Hyperlipidaemia	High risk group: keep LDL < 2.6mmol/l 1 or more risk factors: keep LDL < 3.4mmol/l No risk factor: keep LDL < 4.2mmol/l	I	B
Smoking	Cessation of smoking.	III	C
Aspirin therapy	100mg aspirin every other day may be useful in women above the age of 65.	II-1	B
Post menopausal Hormone Replacement therapy	Oestrogen based HRT is not recommended for primary stroke prevention.	I	A
Alcohol	Avoid heavy alcohol consumption.	II-2	B

SECONDARY PREVENTION

Secondary Prevention of Stroke

Secondary prevention are strategies used after a stroke to prevent recurrence. This should be tailored according to individual stroke pathogenesis based on neuroimaging and investigations. (see Investigations)

The risk for recurrent vascular events after a stroke or transient ischaemic attack is approximately 5% per year for stroke, 3% per year for myocardial infarction and 7% per year for any one of stroke, myocardial infarction or vascular death.¹ This figure is even higher in certain populations especially those with high cerebrovascular atherosclerotic burden and for patients with ipsilateral high grade (70%) extracranial carotid stenosis.²

Anti-platelet therapy

There is substantial evidence to support the value of aspirin. A 25% risk reduction of stroke was seen in all patients with strokes who have received aspirin.³ Aspirin given within 48 hours has also been shown to be beneficial in reducing recurrent stroke and death.³⁻⁵ Studies comparing the effects of different dosages of aspirin failed to show differences in stroke recurrences.⁶⁻⁹

Aspirin: The recommended dose of aspirin post- stroke is 75mg to 325mg orally daily (Level I) Alternative antiplatelet medications can be considered for patients with aspirin allergy, aspirin failure, aspirin intolerance or aspirin contraindications based on the evidence presented below.

Ticlopidine: Previous clinical trials have demonstrated that ticlopidine is slightly superior to aspirin.¹⁰⁻¹¹ Blood monitoring is essential as neutropenia is the most significant side-effect.¹⁰ Severe neutropenia usually occurs within 3 months. Thus, baseline full blood count should be performed every 2-3 weeks within this time frame. Ticlopidine can be used if the patient has recurrent symptoms despite aspirin.

The recommended dose of ticlopidine is 250mg orally twice a day. (Level I)

Clopidogrel: Clopidogrel is a newer thienopyridine derivative. It is slightly superior to 325 mg of aspirin.¹² It may be more beneficial than aspirin in several settings including patients with contraindications or adverse effects to aspirin and in high risk subjects with multiple risk factors (i.e. with a previous stroke, peripheral artery disease, symptomatic coronary disease and diabetes).¹³

The recommended dose is 75mg daily. (Level I)

Triflusal: Triflusal is a viable alternative to aspirin in secondary prevention of ischaemic stroke at a dosage of 600mg daily. There is less haemorrhagic complications compared to aspirin. Triflusal is licensed in Malaysia for the secondary prevention of ischaemic stroke.¹⁴ (new recommendation) (Level I)

Cilostazol: Cilostazol is also another alternative in the secondary prevention of acute ischaemic stroke at the dosage of 100mg b.d. However, at the time of writing, cilostazol is under regulatory review for secondary ischaemic stroke prevention in Malaysia.¹⁵ (new recommendation) (Level I)

Aspirin plus dipyridamole slow release: This combination is superior to aspirin or dipyridamole alone.¹⁶ The combination of aspirin (50mg) plus dipyridamole (400mg) doubles the effect of aspirin or dipyridamole alone. (Level I)

Recommendation: The recommended dose of aspirin is 50 to 325mg daily & slow release dipyridamole 400mg orally daily* (Level I)

*Slow release dipyridamole is not available in Malaysia. Regular dipyridamole can be used with gradual titrations up to the required dosage, but may be limited by side-effects.

Aspirin and clopidogrel combination: Recent evidence from a large trial in post-stroke patients which compared clopidogrel 75mg alone against clopidogrel 75mg and 100mg of aspirin over an 18 month period¹⁷ have shown an excess of gastrointestinal and major intracranial bleeding in the combination arm. The trial results do not support the addition of aspirin to clopidogrel in stroke patients for the purpose of long term secondary prevention. The use of this combination of antiplatelet drugs can only be used in selected high risk patients, who experience stroke recurrence despite monotherapy, when the benefit outweighs the risk.

Anticoagulation with warfarin

Long-term anticoagulation with warfarin after a stroke may reduce recurrent events in patients with atrial fibrillation.

For patients without atrial fibrillation, modern clinical trials such as the WARSS study suggest that warfarin was not more effective compared to aspirin alone.¹⁸ In the latest study (WASID) comparing warfarin with high-dose aspirin (1300mg daily) in patients with intra-cranial stenosis, patients on warfarin had an excess of major haemorrhage and deaths.¹⁹

Recommendations: Warfarin is indicated for secondary stroke prevention for patients with atrial fibrillation. (Level I)

Warfarin is not indicated for secondary stroke prevention for patients in sinus rhythm in absence of other conditions predisposing to cardio-embolic risk. (Level I)

Anti-hypertensive treatment

Reduction of blood pressure after the acute phase of the cerebrovascular event results in a further reduction of vascular events. This benefit has been noted in both ischaemic and haemorrhagic stroke with hypertensive and normotensive subjects.²⁰ Meta-analyses of randomized controlled trials confirm approximately 30 – 40% reduction in stroke risk with blood pressure lowering.²¹

In one study, the combination of an ACE-inhibitor and thiazide diuretic has been beneficial in both hypertensive and normotensive stroke patients when started two weeks after the event.²²

Another study has proven the superiority of an angiotensin receptor blocker, losartan (ARBs) over a beta-blocker (atenolol) in a specific group of high risk patients with left ventricular hypertrophy including subjects with previous stroke.²³

In the post-stroke situation (2 weeks or more after a stroke), ACE-inhibitor based therapy has been shown to reduce recurrent stroke in normotensive and hypertensive patients.²⁴ (Level I)

Other classes of anti-hypertensives (ARB-based) therapy appear to be effective in selected high risk populations.^{25,26} (Level I)

Target blood pressure of absolute levels are not certain but targets based on hypertension guidelines (local or international) can be followed but should be individualized.²⁷ (Level II-1)

The choice of antihypertensive drug therapy (single or combination) should also be individualized based on current evidence and specific patient characteristics.²⁷ (Level II-1)

Carotid Endarterectomy (CEA)

See Revascularization Procedures

Lipid lowering

Statins have been proven to reduce vascular events among high risk patients including subjects with previous strokes.^{28,29} (Level I)

Other risk factors

The control of risk factors such as better glycaemic control in diabetes and smoking cessation have not been the subject of major randomized secondary prevention clinical trials. Although diabetes is recognized as an independent risk factor for ischaemic stroke, better diabetes control results only in a reduction of microvascular but not macrovascular complications.³⁰ Inferences can also be drawn from the positive results of primary prevention trials. (see primary prevention section). Nevertheless, better control of these risk factors should be advocated for better overall health after an ischaemic stroke. (Level III)

Recommendation:

Factors Treatment	Recommendations	Level of evidence	Grade
Antiplatelets <u>Single agent</u>			
Aspirin	The recommended dose of aspirin is 75mg to 325mg daily.	I	A
<i>Alternatives:</i>			
Clopidogrel	The recommended dose is 75mg daily. ¹²	I	A
Ticlopidine	The recommended dose is 250mg twice a day. ^{10,11}	I	A
Trifusal	The recommended dose is 600mg daily. ¹⁴ (new recommendation)	I	A
Cilostazol	The recommended dose is 100mg twice a day. ¹⁵ (new recommendation)	I	A

Double Therapy	Combination therapy of clopidogrel and aspirin is not superior to clopidogrel or aspirin alone; but with higher bleeding complication. (new recommendation)	I	A
<i>Anti-hypertensive treatment</i>	ACE-inhibitor based therapy should be used to reduce recurrent stroke in normotensive and hypertensive patients. ²⁴ ARB-based therapy may benefit selected high risk populations. ^{25,26}	I II-1	A B
<i>Lipid lowering</i>	Lipid reduction should be considered in all subjects with previous ischaemic strokes. ^{28,29}	I	A
<i>Diabetic control</i>	All diabetic patients with a previous stroke should have good glycaemic control.	III	C
<i>Cigarette smoking</i>	All smokers should stop smoking	III	C

9 – CARDIOEMBOLISM

Cardioembolic stroke accounts for about 20% of all ischaemic strokes.¹⁻³ They are in general severe, prone to early recurrence, more likely when there is documented source of embolism, and involvement of different cerebrovascular territories or multiple infarctions. The predominant pathogenic process for stroke associated with cardiac disease is embolism due to formation of intra-atrial and intra-ventricular thrombus.

Atrial fibrillation (AF) whether chronic or paroxysmal, is the most common cause of cardioembolism and accounts for 50% of all cardiogenic emboli. Other high risk conditions are prosthetic heart valves, rheumatic mitral valvular disease, acute myocardial infarction and severe left ventricular dysfunction. Non-thrombotic embolism may result from atrial myxoma and endocarditis.

Investigations are directed at demonstrating cardiac sources of embolism in the absence of significant atherosclerosis or other vascular disease. All patients with CVA/TIA require a 12-lead electrocardiograph. A 24-hour or 48-hour Holter monitor may be required for diagnosis of paroxysmal AF. In addition, all patients under 45 years of age and those in whom baseline investigations did not reveal an apparent cause for CVA will require a transthoracic echocardiogram (TTE). Patients in whom there is high suspicion of cardioembolism not found on TTE may undergo a trans-esophageal echocardiogram (TEE). Conditions in which this method is superior to TTE include identifying thrombi in left atrium and left atrial appendage, patent foramen ovale, atrial septal aneurysm and aortic arch atheroma.^{3,4}

Oral anticoagulation may reduce the risk of first and subsequent strokes for selected high-risk cardiac conditions but must be weighed against the risk of haemorrhagic complications.^{1,2,5,6} (see table b)

Patients with minor risk cardiac conditions (such as mitral valve prolapse, mitral regurgitation, atrial septal aneurysm and patent foramen ovale) without additional risk factors may be offered aspirin 75-325mg/day for primary prevention of stroke.
(Level III)

If patients were aspirin intolerant then consider: clopidogrel 75mg daily, ticlopidine 250mg bd or dipyridamole 400mg daily.¹ (Level III)

Anticoagulation is not indicated for non-thrombotic causes of cardiac emboli and may cause substantial intracranial haemorrhage in infective endocarditis of native valves.¹

Anticoagulation is not proven to reduce recurrent stroke in the first 14 days following an acute cardioembolic event [I, A] with the possible exception of prosthetic heart valves, recent MI, presence of intra-cardiac thrombus, AF with additional risk factors and previous CVA.³ (see table a) (Level III)

Table a. Anticoagulation for the patient with acute cardioembolic stroke

Treatment	Recommendations	Level of Evidence	Grade
Warfarin	Adjusted-dose warfarin may be commenced within 2-4 days after the patient is both neurologically and medically stable.	II-2	C
Heparin (unfractionated)	Adjusted-dose unfractionated heparin may be started concurrently for patients at very high risk of embolism.	III	C
Anticoagulation	Anticoagulation may be delayed for 1-2 weeks if there has been substantial haemorrhage.	III	C
	Urgent routine anticoagulation with the goal of improving neurological outcomes or preventing early recurrent stroke is not recommended.	I	A
	Urgent anticoagulation is not recommended for treatment of patients with moderate-to-large cerebral infarcts because of a high risk of intracranial bleeding complications.	I	A

Table b. Cardiac conditions predisposing to Ischaemic stroke

Major Risk Conditions	Additional risk factors	Recommendation		Level of evidence	Grade
Atrial Fibrillation	Risk factors to be access by CHA ₂ DS ₂ -VASc Score. (Refer Appendix E) (new recommendation)	CHA ₂ DS ₂ -VASc score	Recommended antithrombotic therapy	I	A
		≥2	OAC ^a		
		1	Either OAC ^a or aspirin 75-325mg daily. Preferred: OAC rather than aspirin.		
		0	Either aspirin 75-325mg daily or no antithrombotic therapy. Preferred: no antithrombotic therapy rather than aspirin.		
		^a Oral Anticoagulant Aspirin 75-325mg daily is sufficient for patients < 65 years old with 'lone' AF and no additional risk factors. (new recommendation) Dabigatran etexilate is superior (150mg bid) and as effective (110mg bid) compared to warfarin, in preventing stroke and systemic embolism in non-valvular atrial fibrillation. (new recommendation) Bleeding rates are similar with warfarin for 150mg bid but lower bleeding rates for 110mg bid. * Dabigatran etexilate does not require routine INR monitoring. (new recommendation) Oral factor Xa inhibitors have also been shown to be at least as effective as VKA in their latest trials. However, at the time of writing, these agents are not yet licensed for stroke prevention in atrial fibrillation in Malaysia. (new recommendation)		I	A
				I	A
				I	A
Prosthetic Heart Valves (Mechanical)	<i>Moderate risk:</i> Bileaflet or tilting disk aortic valves in NSR	Life-long warfarin		II-2	B
	<i>High risk:</i> Bileaflet or tilting disk aortic valves in AF; Bileaflet or tilting disk mitral valve in AF or NSR.	Life-long warfarin (target INR 3.0; range 2.5-3.5)		II-3	B
	Caged-ball and caged-disk designs; documented stroke/TIA despite adequate therapy with warfarin.	Life-long warfarin (target INR 3.0; range 2.5-3.5) plus aspirin 75-150mg daily		II-1	B

Bioprosthetic heart valves	<i>High risk:</i> AF; left atrial thrombus at surgery; previous CVA/TIA or systemic embolism	If high risk factors present, consider warfarin for 3-12 months or longer For all other patients, give warfarin for 3 months post-op, then aspirin 75-150mg daily	III III	C C
Mitral Stenosis	<i>High risk:</i> AF; previous stroke/TIA; left atrial thrombus; left atrial diameter > 55mm on echo.	If high risk factors present, consider long-term warfarin For all other patients start aspirin 75-150mg daily	II-3 II-2	B B
MI and LV dysfunction	<i>High risk:</i> Acute/recent MI (<6 mos); extensive infarct with anterior wall involvement; previous stroke/TIA. <i>Very high risk:</i> Severe LV dysfunction (EF < 28%); LV aneurysm; spontaneous echo contrast; LV thrombus; dilated non-ischaemic cardiomyopathies.	If risk factors present without LV thrombus: consider warfarin for 3-6 months followed by aspirin 75-150mg daily If LV thrombus is present, consider warfarin for 6-12 months For dilated cardiomyopathies including peripartum, consider long-term warfarin	III III III	C C C
Recommended warfarin dose INR target 2.5 [range 2.0 to 3.0] unless stated otherwise				

HAS-BLED^{7,8} stands for hypertension, abnormal renal/liver function, stroke, bleeding history or predisposition, labile INR, elderly (age over 65), and drugs/alcohol concomitantly; the maximum possible score is 9—with 1 point for each of the components (with abnormal renal/liver function, for example, possibly scoring two if both are present and similarly drugs/alcohol possibly contributing 2 points). "Drugs" refers to any medications that increase bleeding risk during anticoagulation, such as aspirin, nonsteroidal anti-inflammatory drugs (NSAIDs), or even steroids on top of warfarin, and "alcohol" refers to alcohol abuse. (new recommendation)

Risk of bleeding as follow: see chart

HAS-BLED score	n	Bleeds, n	Bleeds/100 patients*
0	798	9	1.13
1	1286	13	1.02
2	744	14	1.88
3	187	7	3.74

10– REVASCULARISATION PROCEDURES

Surgical procedures in stroke management may be classified to procedures performed to prevent first stroke occurrence (primary prevention in asymptomatic patients) or following a stroke event (secondary prevention).

PRIMARY PREVENTION

Carotid endarterectomy (CEA) has been compared to conservative medical therapy for asymptomatic patients without prior history of TIA or stroke but for whom imaging of the carotid arteries has revealed a definite stenosis. There have been 5 published randomized studies but only 2 are sufficiently powered to detect outcomes between surgery and conservative approach. The absolute 5-year risk reduction for patients with 70-99% carotid artery stenosis (by ultrasound) was 5.4% in the recent follow-up of the ACST trial,¹ which was consistent with the ACAS study² from North America (5.9% absolute 5-year risk reduction). This translates into 1% annual stroke rate reduction. Patients who are asymptomatic and receiving appropriate medical therapy face only a 2% annual stroke rate without CEA. Surgical morbidity and mortality often exceed this beneficial risk reduction. In the ACST and ACAS trials, surgery-related events was 3.1% and 2.3% respectively.¹⁻² In an unselected patient group undergoing CEA in a centre without proper auditing of the surgeon's or centre's operative records, the complications are likely to outweigh the benefits of CEA. Furthermore asymptomatic patients should not be offered CEA if their 5-year probability of dying from unrelated causes are high. Finally, in the NASCET study, nearly 45% of all strokes occurring in patients with asymptomatic stenosis may be attributable to lacunar infarcts or cardioembolism.⁵

Recommendation:

Endarterectomy may be considered in patients with high-grade asymptomatic carotid stenosis (70-99%) when performed by a surgeon with less than 3% morbidity / mortality rate. (Level I)

Careful patient selection, guided by comorbid conditions, life expectancy, and patient preference, followed by a thorough discussion of the risks and benefits of the procedure is required. It is important that asymptomatic patients receive appropriate medical treatment and be fully evaluated for other treatable causes of stroke.

SECONDARY PREVENTION

2 large randomized trials (NASCET and ECST) have compared the outcomes of patients with recent cerebrovascular symptoms treated conservatively or with carotid endarterectomy.¹⁰⁻¹¹ Long term follow-up and a meta-analysis is available for these trials.¹² Standardizing for the same measurements and definitions yielded highly consistent results among all 3 trials. In general, CEA is highly beneficial for patients with carotid stenosis 70-99% producing a 16% absolute 5-year risk reduction (ARR). For patients with 50-69% stenosis, the 5-year ARR was 4.6%. No benefit was observed for patients with milder degrees of stenosis. Subgroup analyses revealed that benefit in surgery was greatest in men, aged 75 years or older, and those randomized within 2 weeks of their stroke event. The studies excluded patients with medical co-morbidities, previous neck irradiation, recurrent stenosis following previous endarterectomy.

Extracranial-intracranial anastomosis between the superficial temporal and middle cerebral arteries (EC-IC Bypass) has not been shown to be beneficial for secondary stroke prevention by the EC/IC Bypass Study Group.

Recommendations:

CEA is indicated for patients with carotid stenosis of 70-99% without a severe neurological deficit with recent ischaemic events (less than 180 days) in centres with a perioperative complications rate for all strokes and deaths of less than 6%. (Level I)

Early CEA is indicated for patients with carotid stenosis of 70-99% without a severe neurological deficit within 2 weeks of recent ischaemic events in centres with a perioperative complications rate for all strokes and deaths of less than 6%. (Level II-1)

CEA may be indicated for patients with carotid stenosis of 50-69% without a severe neurological deficit with recent ischaemic events (less than 180 days) in centres with a perioperative complications rate for all strokes and deaths of less than 6%. (Level III)

CEA is not recommended for patients with carotid stenosis less than 50%. (Level I)

CEA should not be performed in centres not exhibiting low complications rates similar to those seen with NASCET or ECST. (Level I)

Patients should remain on antithrombotic therapy before and after surgery. (Level II-2)

EC/IC Bypass is not recommended for secondary stroke prevention. (Level I)

ANGIOPLASTY OR STENTING

This is a rapidly evolving field in stroke treatment and prevention. Several randomized trials have compared extra-cranial carotid angioplasty and stenting (CAS) to carotid endarterectomy (CEA).¹⁻⁵ CAS represents a feasible alternative to carotid endarterectomy for secondary stroke prevention when surgery is undesirable, technically difficult or inaccessible.⁶⁻⁸ (Level II-2)

In recent studies, the 4 years outcome in death, stroke and myocardial infarction were similar in CAS and CEA. However, the periprocedural rate of stroke was higher in the CAS group while the periprocedural rate of myocardial infarction was higher in the CEA group. Selection of patients for either CAS or CEA may require attention to age, with younger patients having a slightly better outcome with CAS and older patients having a better outcome with CEA.^{15,16,17} (new recommendation)

The criteria needed for a centre to do CAS must be: (new recommendation)

- 1) highly qualified surgeons and interventionists
- 2) surgeons and interventionists that are credentialed
- 3) must use distal embolic protection device
- 4) use of dual antiplatelet therapy after CAS for at least 4 weeks

Intracranial artery stenting (IAS) is also technically feasible but has also not been proven as an established treatment modality. Re-stenosis rate up to 30% have been reported.¹⁶ The clinical data has much less evidence with more controversy compared to carotid angioplasty.¹⁷⁻¹⁸ The role of CAS in intra-cranial stenoses, asymptomatic stenoses and acute stroke is unclear and not recommended.⁹⁻¹¹ (Level II-2)

Recommendations:

Careful selection of patients by centers experienced in cerebrovascular disease is recommended. As angioplasty with or without stenting is still an investigational procedure, it should be carried out under appropriate clinical trial protocols.

Treatment	Recommendations	Level of Evidence	Grade
Carotid Endarterectomy (CEA)	Indicated for most patients with stenosis of 70-99% after a recent ischaemic event in centres with complication rates of less than 6%. ^{1,2}	I	A
	Earlier intervention (within 2 weeks) is more beneficial.	II-1	B
	May be indicated for patients with stenosis of 50-69% after a recent ischaemic event in centres with complication rates of less than 6%.	III	C
	CEA is not recommended for patients with stenosis of less than 50%.	I	A
	Patients should remain on antiplatelet therapy before and after surgery.	II-2	B
Carotid angioplasty and stenting (CAS)	CAS represents a feasible alternative to carotid endarterectomy for secondary stroke prevention when surgery is undesirable, technically difficult or inaccessible.	II-2	B
	Distal protection devices should be used during the procedure.	I	A
	Use of dual antiplatelet for at least 4 weeks after CAS. (new recommendation)	I	A
	The long term safety (for 4 years) for CAS is as good as CEA. (new recommendation)	I	A
Intracranial angioplasty & stenting (IAS)	Role of IAS in intra-cranial stenoses, asymptomatic stenoses and acute stroke is unclear and not recommended.	II-2	C

11 – STROKE IN SPECIAL CIRCUMSTANCES

STROKE IN THE YOUNG

Stroke is a rare occurrence before the age of 45. Young stroke is usually caused by a variety of conditions which are distinct from degenerative arterial disease. Across a broad range of causes, stroke in the young is associated with better prognosis than in the elderly. Nevertheless, the socioeconomic impact is often substantial. This discussion will cover ischaemic infarction; stroke in childhood will be excluded.

Young stroke may be broadly classified into two groups: (i) atherothrombotic disease caused by accelerated atherosclerosis and (ii) non-atherothrombotic stroke. The cause can be identified in approximately half the cases.

The list below is not exhaustive.

Atherothrombotic	
Atherothrombotic	Uncommon before age 45, incidence increases with age Classic vascular risk factors present
Non atherothrombotic	
Pro-thrombotic states	Abnormal blood rheology – dehydration, polycythaemia, thrombocythaemia, paraproteinaemia, etc Hypercoaguable states – malignancy, pregnancy, oestrogens, hyperhomocysteinaemia, anti-phospholipid antibodies, deficiency protein c, protein s, carrier state of Factor V-Leyden, etc Abnormal cellular components – sickle cell disease, leukaemia, etc
Cardiogenic embolism	Atrial fibrillation Valvular lesions PFO (patent foramen ovale), ASA (atrial septal aneurysm), etc see Cardioembolism
Arterial diseases	Trauma, vascular dissection, cystic medial necrosis, fibromuscular dysplasia, hereditary haemorrhagic telangiectasia Vasculitis – primary / secondary to infection / drug-related - Primary – SLE, PAN, Takayasu's (primary) arteritis, granulomatous angiitis - Complication of infection – meningitis, syphilis, chicken pox, HIV/AIDS - Drug-related – heroin, LSD, cocaine, amphetamines, ephedrine, phenylpropanolamine
Miscellaneous	Migraine Moya-moya's disease Metabolic disorders – mitochondrial cytopathies, leukodystrophy (CADASIL), etc

Cerebral venous thrombosis	<p>This condition is associated with a significant mortality ranging from 5 to 30 percent from retrospective studies.</p> <p>Notable for its occurrence in young children and the peri-partum state. Headache, seizures and imaging appearance should alert to this possibility.</p> <p>An increased thrombotic tendency occurs in low-flow states (including dehydration), hypercoagulable states (primary and secondary) as well as abnormalities of the vessel wall caused by infection, inflammation, trauma or cancer.</p> <p>Often, more than one risk factor is necessary for the development of CVT. Hence, even in the presence of a known risk factor such as pregnancy and dehydration, an underlying cause should be excluded.</p>
----------------------------	--

Investigation of the Young Stroke

- I. Identify the cause / predisposing factor
 - A) Search for classical vascular risk factors
 - B) Special diagnostic tests (see section on Investigations)
 - i. Fasting homocysteine
 - ii. Auto-antibody screen, including antiphospholipid antibodies
 - iii. Coagulation screen if indicated:
 - Serum fibrinogen
 - Anti-thrombin III
 - Protein C and Protein S
 - Factor V-Leyden
 - C) Radiological investigations (see chapter Investigations)

Recommendations:

Treatment	Recommendations	Level of evidence	Grade
Aspirin	Young Ischaemic stroke If the cause is not identified, aspirin is usually given. There are currently no guidelines on the appropriate duration of treatment.	III	C
Heparin	Cerebral Venous thrombosis Anticoagulation appears to be safe, and cerebral haemorrhage is not a contra-indication for anticoagulation.	II-I	B
Warfarin	Simultaneous oral warfarin should be commenced. The appropriate length of treatment is unknown.	III	C
Mannitol	Mannitol (0.25 to 0.5 g/kg) intravenously administered over 20 minutes lowers intracranial pressure and can be given every 6 hours. (new recommendation)	III	C
Endovascular thrombolysis	It is currently considered for patients with extensive disease and clinical deterioration.	III	C

STROKE AND PREGNANCY

Introduction

The reported incidence of pregnancy-related stroke varies widely, but probably lies between 11 and 26 deliveries per 100,000.^{3,4,5,6,7} Although uncommon, stroke is a leading cause of maternal death. The naturally increased risk is compounded by any hypercoagulable state (inherited or acquired), intracranial vascular lesion or arterial hypertension. Pregnancy also imposes additional haemodynamic demands, more so when there is a concomitant cardiac disorder. (new recommendation)

Caesarean delivery has been shown to be associated with a 3-12 times increased risk of peripartum and postpartum stroke.^{8,9} (new recommendation)

I. Ischaemic stroke in pregnancy and the puerperium

Any of the causes of ischaemic stroke in the young, including cerebral venous thrombosis (see previous section) may present during pregnancy and the puerperium.

In addition, the following causes of ischaemic stroke are peculiar to the pregnant state:

- a) peripartum cardiomyopathy
- b) amniotic fluid embolism
- c) disseminated intravascular coagulation
- d) hypotensive emergency – borderzone infarction, Sheehan's syndrome

II. Haemorrhagic stroke in pregnancy

- a) eclampsia
- b) hypertension in pregnancy
- c) choriocarcinoma
- d) rupture of berry aneurysm, arteriovenous or other vascular malformation

Treatment of ischaemic stroke in pregnancy

Issues to be considered

Risks to both the mother and foetus have to be considered. When there is conflict, the welfare of the mother must take precedence.

a) Teratogenicity

Aspirin may be used throughout pregnancy. Safety of the other anti-platelet agents has not been established. Warfarin is contraindicated in the first trimester and needs to be substituted with heparin (either unfractionated or low molecular weight heparin, depending on the condition under treatment).

Level III, Grade C

b) Risk of bleeding

Use of anti-thrombotic treatment needs to be closely coordinated with the obstetrician.

c) Foetal loss

Drugs associated with risk of spontaneous abortion and premature labour are to be avoided.

d) Haemorrhagic risk to the newborn

Any potential impact on the newborn must be assessed. This is most crucial for anticoagulants.

e) Excretion in breast milk

The following drugs may not be used when breast-feeding:

- Warfarin, Ticlopidine, Clopidogrel, Dipyridamole

12 – IMPLEMENTING THE GUIDELINES: (new recommendation)

At present there are existing barriers which can create difficulties in applying the recommendations in the CPG including:

1. Poor understanding/limited knowledge of stroke
2. Delay in patient arriving the Emergency Department
3. Inadequate training of the healthcare providers
4. Insufficient resources in the management of Ischemic stroke
5. Poor coordination between primary and secondary/tertiary health care
6. No National database of Stroke for planning of services

Therefore in the steps towards implementation of the CPG, there must be strong commitment to:

1. Ensure widespread distribution of the CPG to health care personnel via printed copies, electronic websites, etc.
2. Re-enforce training of health care personnel by regular seminars or workshops to ensure information is made available
3. Develop multidisciplinary teams at hospital and community level to include involvement of rehabilitation clinicians (physiotherapists, occupational therapists, speech & language pathologist), medical social worker, counselor and support from community level (NGOs). Expertise and personnel involved however, depend on the expertise, locality and resources available in the area.
4. Creating a clinical provision pathway linking services of acute management, transfer of care and post-discharged management between hospital and primary care services for better coordination in overall stroke management.
5. Ensure screening and monitoring facilities are available at all sites
6. Ensure availability of the drugs mentioned in the CPG
7. Develop coordinated linkage between specialists and primary health care teams so that referral for further management is readily available
8. Collect a database of stroke for the country
9. Ensure awareness of stroke among public in aspects of primary prevention, early symptoms and services available for stroke survivors in the community.

A national surveillance data should be in the future planning. In the meantime **clinical audit indicators for quality management** were proposed for this CPG are:

- 1-To initiate deep vein thrombosis (DVT) prophylaxis.
- 2-To discharge the patients with antithrombotic therapy.
- 3-To initiate anticoagulation therapy for patients with atrial fibrillation.
- 4-To administer thrombolytic therapy to eligible patients.
- 5-To initiate antithrombotic therapy by end of day two upon hospitalization.
- 6-To discharge the patients with cholesterol reducing medication.
- 7-To conduct Dysphagia Screening
- 8-To educate patients on Stroke as a disease.
- 9-To assessed patients suitability for rehabilitation

The above clinical audit indicators for quality management were consolidated into the 9 KPI recommended by Stroke Council, Malaysian Society of Neurosciences which is also being used in Malaysia National Stroke Registry. (Refer Appendix H)

13 – CONCLUSION

Over the last decade, major advances have been made in acute management of ischaemic stroke. These advances have occurred along with advances in imaging methods as well as treatments for primary and secondary prevention. Some of the recommendations may be adopted for general use while there are others that may only be used in controlled settings with highly experienced and dedicated teams.

Further ongoing studies and clinical trials will better define the usage of agents in terms of identifying particular subgroups of patients who are best suited for certain kinds of therapy based on underlying pathophysiology and cause of stroke.

The general care of stroke patients in the ward still plays a vital role in the quest to achieve better outcomes. Many complications can be anticipated and avoided in the acute stroke setting as well as in the rehabilitation period. Basic infrastructure for acute stroke care is already available but reorganization and strengthening of various components such as manpower, training and networking are necessary to enable multidisciplinary inputs to avail early for the patients' benefit. Ideally this would be done in the setting of stroke units. There is also urgent need to strengthen all the components of in-hospital and after-discharge care.

Research, audit and epidemiological studies are needed to be carried out to know the pattern of illness in our own community, what happens to patients and what kind of support systems are available to them outside the hospital.

There are reports of ethnic differences in stroke prevalence as well as risk factor prevalence although the reasons are not fully understood. Clearly there must be impetus to gain information on ethnic and racial differences in stroke incidence, prevalence and vascular risk factors in Malaysia which can have major impact on clinical and public health services on a population level.

Finally, of importance is the management of stroke to be recognized as an acute medical emergency and for therapeutic nihilism to be abolished as standard practice. Although not available everywhere, therapeutic options are available in the first few hours after stroke onset. Education of the general population on symptoms of stroke and the urgency to arrive at a hospital for treatment will fundamentally change the outlook for many stroke survivors.

14 – REFERENCES

1- Introduction & Epidemiology

1. Murray CJL, Lopez AD. Mortality by cause for eight regions of the world: Global Burden of Disease Study. *Lancet* 1997; 349: 1269-76
2. World Health Organization. <http://www.who.int/>
3. Venketasubramanian N The epidemiology of stroke in ASEAN countries - A review. *Neurol J SEA* 1998; 3: 9-14.
4. Health Facts, 2009. Health Information Centre, Planning and Development Division, Ministry of Health.
5. S C Johnston, S Mendis, CD Mathers. Global variation in stroke burden and mortality : estimates from monitoring, surveillance and modeling. *Lancet Neurol* 2009; 8: 345-54.
6. Ng WK, Baird A, Donnan GA, George J, Tan CT. A comparative study of stroke patterns among Asians and Caucasians. *Cerebrovasc D* 1996; 6 suppl2: 7.
7. Kay R, Wong KS. Epidemiology of stroke in Chinese. *Neurol J SEA* 1998; 3: 1 – 4.
8. Leung SY, Ng TH, Yuen ST, Launder IJ, Ho FC. Pattern of cerebral atherosclerosis in Hong Kong Chinese. Severity in intracranial and extracranial vessels. *Stroke* 1993; 24: 779–786.

3- Diagnosis

1. Norris JW, Hachinski VC. Misdiagnosis of stroke. *Lancet* 1982;1:328-331

4- Prognosis

1. Caplan L.R. Intracerebral haemorrhage. *Lancet*.1992;339:656-658
2. Labovitz DL, Sacco RL. Intracerebral haemorrhage: update. *Curr Opin Neurol*. 2001;14:130-108
3. Qureshi AI, Tuhim S, Broderick JP, Batjer HH, Hondo H, Hanley DF. Spontaneous intracerebral haemorrhage. *N Eng J Med*. 2001;334:1450-1460
4. Kiyohara, Yutaka, Kubo et al. Ten-year prognosis of stroke and risk factors for death in a Japanese community: The Hisayama study. *Stroke*. 2003;34(10):2343-2347
5. Paolucci, Stefano, Antonucci et al. Functional outcome of ischaemic and haemorrhagic stroke patients after inpatient rehabilitation: A matched comparison. *Stroke* 2003;34(12):2851-2865
6. K.S. Wong et al. Risk factors for early death in acute ischaemic stroke and intracerebral hemorrhage: A prospective hospital based study in Asia. *Stroke* 1999; 30(11): 2326-2330
7. Kolominisky-Rabas PI, Weber M, Gefeller O et al. Epidemiology of ischaemic stroke subtypes according to TOAST criteria; incidence, recurrence and long-term survival in ischaemic stroke subtypes, a population-based study. *Stroke* 2001, 32; 2735-40
8. Immonen-Raiha, P., Mahonen, M., Tuomilehto, J. et al. Trends in case fatality of stroke in Finland during 1983-92. *Stroke* 28: 2493-2499
9. Peltonen, M., Stegmayr, B, Asplund, K. Time trends in long-term after stroke: The Northern Sweden Multinational Monitoring of Trends and Determinants in Cardiovascular disease (MONICA) study, 1985-94. *Stroke*1998; 29: 1358-1365
10. Stroke Unit Trialists' Collaboration. A collaborative systemic review of the randomized trials of organized inpatient (stroke unit) care after first stroke. *BMJ* 1997;314: 1151-59
11. Indredavik B et al. Benefit of a Stroke Unit: A Randomised Controlled Trial. *Stroke* 1997;22(8):1026-1031
12. Langhorne P et al. Do stroke units save lives? *Lancet* 1993;342:395-398
13. Jørgensen HS et al. The effects of a stroke unit: Reductions in mortality, discharge rate to nursing home, length of hospital stay, and cost. *Stroke* 1995;26(7):1178-1182
14. Indredavik B et al. Long-term effect of treatment in a stroke unit. *Stroke* 1997;28:1861-1866
15. Indredavik B et al. 10 years follow up after stroke unit treatment. *Stroke* 1999;30:1524-1527
16. Dennis M, Burn JP, Sandercock PAG et al. Long-term survival after first-ever stroke: The Oxford shire Community stroke Project. *Stroke* 1993;24:796-800
17. Hankey GJ, Jamrozik K, Broadhurst RJ, Frobes S, Burvill PW, Anderson CS, Stewart-Wynne EG : Five year survival after first-ever stroke and related prognostic factors in the Perth Community stroke Study. *Stroke* 2000;31:2080-2086
18. Terent A. Cerebrovascular mortality 10 years after stroke: a population-based study. *Stroke*;2004;35970:343-345
19. Hamidon Basri, Raymond Azman Ali. Predictors of in-hospital mortality after an acute ischaemic stroke. *Neurol J Southeast Asia* 2003; 8: 5-8
20. Hart C et al. Risk factors and 20 years stroke mortality in men and women in the Renfrew/Paisley study in Scotland. *Stroke*. 1999;30:1999-2007
21. Hankey GJ, Jamrozik K, Broadhurst RJ, Frobes S, Burvill PW, Anderson CS, Stewart-Wynne EG : Long-term risk of recurrent stroke in the Perth Community Stroke Study. *Stroke* 1998;29:2491-2500
22. Burn J, Dennis M, Bambord J, Sandercock P, Wase D, Warlow C;Long term risk of recurrent stroke after a first-ever stroke. The Oxford shire Community Stroke Project. *Stroke* 1994;25:333-337
23. Hardie K, Hankey GJ, Jamrozik K, Broadhurst RJ, Anderson C. Ten-year risk of first recurrent stroke and disability after the first-ever stroke in the Perth Community Stroke Study. *Stroke* 2004;35 (3):731-735
24. Dimyam MA, Cohen LG. Neuroplasticity in the context of motor rehabilitation after stroke. *Nature Reviews Neurology*. 2011;7:76-85. Kwakkel G, Boudewijn K, Twisk J. Impact of time on improvement of outcome after stroke. *Stroke*. 2006;37: 2348-2353.

7- Acute Treatment

1. Hacke W et al. Intravenous thrombolysis with recombinant tissue plasminogen activator for acute hemispheric stroke: the European Cooperative Acute Stroke Study (ECASS). *JAMA*. 1995;274:1017-1025.
2. The National Institute of Neurological Disorders and Stroke rt-PA Stroke Study Group. Tissue plasminogen activator for acute ischemic stroke. *England J Med*. 1995;333:1581-1587.
3. Hacke et al. Randomised double blind placebo controlled trial of thrombolytic therapy with alteplase in acute ischemic stroke (ECASS II): European Australasian Acute Stroke Study Investigators. *Lancet* 1998;352:1245-1251
4. Clark WM et al. Recombinant tissue type plasminogen activator (alteplase) for ischemic stroke 3 to 5 hours after symptom onset :the ATLANTIS study: a randomized controlled trial. *JAMA*. 1999;282:2019-2026
5. Warlow C, Warlaw J. Therapeutic thrombolysis for acute ischaemic stroke. *BMJ* 2003;326:233-234
6. Hommel et al. Termination of trial of Streptokinase for acute ischemic stroke: MAST Study Group. *Lancet*. 1995;345-57
7. Hacke W, Kaste M, Bluhmki E, Brozman M, D'avalos A, Guidetti D, Larrue V, Lees KR, Medeghri Z, Machnig T, Schneider D, von Kummer R, Wahlgren N, Toni D; ECASS Investigators. Thrombolysis with alteplase 3 to 4.5 hours after acute ischemic stroke. *N Engl J Med* 2008;**359**:1317-29.
8. Diserens K, Michel P, Bogousslavsky J. Early Mobilization after stroke. A review of literature. *Cerebrovasc Dis*. 2006; 22 (2-3): 183-90
9. Bernhard J, Thury MNT, Collier JM, Legg LA. Very early versus delayed mobilization after stroke.2009. *Cochrane Review*. Issue 1
10. Adams HP Jr, del Zoppo G, Alberts MJ, et al. Guidelines for the early management of adults with ischemic stroke: a guideline from the American Heart Association/ American Stroke Association Stroke Council, Clinical Cardiology Council, Cardiovascular Radiology and Intervention Council, and the Atherosclerotic Peripheral Vascular Disease and Quality of Care Outcomes in Research Interdisciplinary Working Groups: the American Academy of Neurology affirms the value of this guideline as an educational tool for neurologists [published corrections appear in. *Stroke* 2007;38:1655e711. e38 and 2007;38:e96.
11. Gobin YP, Starkman S, Duckwiler GR, et al. MERCI 1: a phase 1 study of Mechanical Embolus Removal in Cerebral Ischemia. *Stroke* 2004;35:2848e54.
12. Smith WS, Sung G, Saver J, et al. Multi MERCI Investigators. Mechanical thrombectomy for acute ischemic stroke: final results of the Multi MERCI trial. *Stroke* 2008;39:1205e12.
13. Phatourous CC, Higashida RT, Malek AM, et al. Endovascular stenting of an acutely thrombosed basilar artery: technical case report and review of the literature. *Neurosurgery* 1999;44:667e73.
14. The Penumbra Pivotal Stroke Trial Investigators. The Penumbra Pivotal Stroke Trial: Safety and Effectiveness of a New Generation of Mechanical Devices for Clot Removal in Intracranial Large Vessel Occlusive Disease. *Stroke*. 2009;40:2761-2768.

Stroke unit

1. Stroke Unit Trialists' Collaboration. A collaborative systemic review of the randomized trials of organized inpatient (stroke unit) care after first stroke. *BMJ* 1997;314: 1151-59
2. Indredavik B et al. Benefit of a Stroke Unit; A Randomised Controlled Trial. *Stroke* 1997;22(8):1026-1031
3. Langhorne P et al. Do stroke units save lives? *Lancet* 1993;342:395-398
4. JÖrgensen HS et al. The effects of a stroke unit: Reductions in mortality, discharge rate to nursing home, length of hospital stay, and cost. *Stroke* 1995;26(7):1178-1182
5. Indredavik B et al. Longterm effect of treatment in a stroke unit. *Stroke* 1997;28:1861-1866
6. Indredavik B et al. 10 years follow up after stroke unit treatment. *Stroke* 1999;30:1524-1527
7. Karla L et al. Alternative strategies for stroke care: a prospective randomized controlled trial. *Lancet* 2000;356:894-899
8. JÖrgensen HS et al. Who benefit from treatment and rehabilitation in a stroke unit? A community –based study. *Stroke* 2000; 31:434-439
9. Evan A et al. Can difference in management process explain different outcomes between stroke unit and stroke team care? *Lancet* 2001;358:1586-1592

General Management

1. Adams HP, Adams RJ, Brott T, Zoppo GJ, Furian A, Goldstein LB et al. Guidelines for the early management of patients with ischaemic stroke: a scientific statement from the stroke council of the American Stroke Association. *Stroke* 2003; 34:1056-1082.
2. Krieger D, Hacke W. The intensive care of the stroke patient. In: Barnett HJM, et al, eds. *Stroke: Pathophysiology, Diagnosis and Management*. 3rd ed. New York: Churchill Livingstone; 1998.
3. Grotta J, Paster W, Khwaja G, Hamel T, Fisher M, Ramirez A. Elective intubation for neurologic deterioration after stroke. *Neurology*. 1995; 45: 640–644.
4. Adams HP Jr. Management of patients with acute ischaemic stroke. *Drugs*. 1997; 54 (suppl 3): 60–69.
5. Treib J, Grauer MT, Woessner R, Morgenthaler M. Treatment of stroke on an intensive stroke unit: a novel concept. *Intensive Care Med*. 2000; 26: 1598–1611.
6. Langhorne P. Measures to improve recovery in the acute phase of stroke. *Cerebrovasc Dis*. 1999; 9 (suppl 5): 2–5.
7. BB Hamidon, AA Raymond. Risk Factors and Complications of acute ischaemic stroke patients at HUKM. *Malaysian Med J Malaysia* 2003 ; 58:307-313
8. Linn SL, Granat MH, Lees KR. Prevention of shoulder subluxation after stroke with electrical stimulation. *Stroke*. 1999; 30: 963–968.
9. Tutuarima JA, van der Meulen JH, de Haan RJ, van Straten A, Limburg M. Risk factors for falls of hospitalized stroke patients. *Stroke*. 1997; 28: 297–301.
10. Brott T, Lu M, Kothari R, et al. Hypertension and its treatment in the NINDS rt-PA Stroke Trial. *Stroke*. 1998; 29: 1504–1509.
11. Powers WJ. Acute hypertension after stroke: the scientific basis for treatment decisions. *Neurology* 1993; 43:461-467.
12. Grossman E, Messeri FH, Grodzicki T, Kowey P. Should a moratorium be placed on sublingual nifedipine capsules given for hypertensive emergencies and pseudoemergencies? *JAMA*. 1996; 276: 1328–1331.
13. BB Hamidon, AA Raymond. The impact of diabetes mellitus on in-hospital stroke mortality. *J Postgrad Med* 2003; 49:306-308
14. Scott JF, Robinson GM, French JM, O'Connell JE, Alberti KG, Gray CS. Glucose Potassium Insulin Infusions in the treatment of acute stroke patients with mild to moderate hyperglycaemia. *Stroke* 1999; 30:793-799
15. Robbins J. The evolution of swallowing neuroanatomy and physiology in humans: a practical perspective. *Ann Neurol*. 1999; 46: 279–280.
16. The FOOD Trial Collaboration. *Lancet* 2005: 365: 764-72
17. Addington WR, Stephens RE, Gilliland K, Rodriguez M. Assessing the laryngeal cough reflex and the risk of developing pneumonia after stroke. *Arch Phys Med Rehabil*. 1999; 80: 150–154.
18. Wijdicks EF, McMahon MM. Percutaneous endoscopic gastronomy after acute stroke: complications and outcome. *Cerebrovasc Dis*. 1999; 9: 109–111.
19. BB Hamidon, AA Raymond, MI Norlinah, SB Jefferelli. The predictors of early infection after an acute ischaemic stroke. *Singapore Med J* 2003; 44(2):73-76
20. Hajat C, Hajat S, Sharma P. Effects of post-stroke pyrexia on stroke outcome: a meta-analysis of studies in stroke patients. *Stroke*. 2000; 31: 410–414.

21. Wang Y, Lim LL, Levi C, Heller RF, Fisher J. Influence of admission body temperature on stroke mortality. *Stroke*. 2000; 31: 404–409.
22. Gujjar AR, Delbert E, Manno EM, Duff S, Diringner MN. Mechanical ventilation for ischemic stroke and intracerebral hemorrhage: indications, timing, and outcome. *Neurology*. 1998; 51: 447–451.
23. Manno EM, Adams RE, Derdeyn CP, Powers WJ, Diringner MN. The effects of mannitol on cerebral oedema after large hemispheric cerebral infarct. *Neurology*. 1999; 52: 583–587.
24. Schwab S, Steiner T, Aschoff A, et al. Early hemicraniectomy in patients with complete middle cerebral artery infarction. *Stroke*. 1998; 29: 1888–1893.
25. Sakai K, Iwashiki K, Terada K, Gohda Y, Sakurai M, Matsumoto Y. Outcome after external decompression for massive cerebral infarction. *Neurol Med Chir*. 1998; 38: 131–135.
26. Mori K, Ishimaru S, Maeda M. Unco-parahippocampotomy for direct surgical treatment of downward transtentorial herniation. *Acta Neurochir*. 1998; 140: 1239–1244.
27. Hornig CR, Rust DS, Busse O, Jauss M, Laun A. Space-occupying cerebellar infarction: clinical course and prognosis. *Stroke*. 1994; 25: 372–374.
28. Cho DY, Chen TC, Lee HC. Ultra-early decompressive craniectomy for malignant middle cerebral artery infarction : Surgical Neurology 2003; 60: 227 – 232

8- Prevention

Primary prevention

1. Brown RD, Whisnant JP, Sicks JD, et al. Stroke incidence, prevalence, and survival: secular trends in Rochester, Minnesota, through 1989. *Stroke*. 1996;27:373–380.
2. Wolf PA, D'Agostino RB, O'Neal MA, et al. Secular trends in stroke incidence and mortality: the Framingham Study. *Stroke*. 1992;23: 1551–1555.
3. Sacco RL, Boden-Albala B, Gan R, et al. Stroke incidence among white, black, and Hispanic residents of an urban community: the northern Manhattan Stroke Study. *Am J Epidemiol*. 1998;147:259 –268.
5. Kittner SJ, Stern BJ, Feeser BR, et al. Pregnancy and the risk of stroke. *N Engl J Med*. 1996;335:768 –774.
6. Qureshi AI, Giles WH, Croft JB, et al. Number of pregnancies and risk for stroke and stroke subtypes. *Arch Neurol*. 1997;54:203–206.
7. Mosca L, Manson JE, Sutherland SE, et al. Cardiovascular disease in women: a statement for healthcare professionals from the American Heart Association Writing Group. *Circulation*. 1997;96:2468 –2482.
8. Welin L, Svardssudd K, Wilhelmsen L, et al. Analysis of risk factors for stroke in a cohort of men born in 1913. *N Engl J Med*. 1987;317: 521–526.
9. Kiely DK, Wolf PA, Cupples LA, et al. Familial aggregation of stroke: the Framingham Study. *Stroke*. 1993;24:1366 –1371.
10. Ridker PM, Cook NR, Lee IM, et al. A randomized trial of low dose aspirin in the primary prevention of cardiovascular disease in women. *N Engl J Med*. 2005 ;352: 1293–304.
12. Wolf PA. Cerebrovascular risk. In: Izzo JL Jr, Black HR, Goodfriend TL, et al. *Hypertension Primer: The Essentials of High Blood Pressure*. Baltimore, Md: Lippincott Williams & Wilkins; 1999.
13. Joint National Committee. The sixth report of the Joint National Committee on Prevention, Detection, Evaluation, and Treatment of High Blood Pressure. *Arch Intern Med*. 1997;157:2413–2446.
14. Staessen JA, Fagard R, Thijs L et al. Randomised double-blind comparison of placebo and active treatment for older patients with isolated systolic hypertension. *The Lancet*. 1997;350: 757-764
15. The ALLHAT group. *JAMA*. 2002; 283(15): 1967-75
16. SHEP Research Group. *JAMA*. 1991; 265(24): 3255-64
17. Dahlöf B, Devereux RB, Kjeldsen SB et al. Cardiovascular morbidity and mortality in the Losartan intervention for endpoint reduction in hypertension study (LIFE): A randomised trial against atenolol. *Lancet*. 2002 359: 1004-10
18. The Seventh Report of the Joint National Committee on Prevention, Detection, Evaluation, and Treatment of High Blood Pressure JNC 7).
19. American Diabetes Association Clinical Practice Recommendations 2006. *Diabetes Care*. Vol21 Suppl 1.
20. Wolf PA, D'Agostino RB, O'Neal MA, et al. Secular trends in stroke incidence and mortality: the Framingham Study. *Stroke*. 1992;23: elkind et al. stroke vol37 jan2006,
22. kammersgaard et.al. cerebro vasc disease: vol 21: 2005
23. Risks and benefits of Estrogen plus Progestin in healthy Postmenopausal Women. *JAMA*. 2002; 266: 321-333
24. Brown SA et al. *Arterioscler Thromb* 1993; 13: 1558-66
25. Tuomilehto J, Rastenyte D. Diabetes and glucose intolerance as risk factors for stroke. *J Cardiovasc Risk*. 1999;6:241–249.
26. Stamler J, Vaccaro O, Neaton J et al. Multiple Risk Factor Intervention Trial Research Group. (1993) Diabetes, other risk factors and cardiovascular mortality for men screened in the Multiple Risk Factor Intervention Trial. *Diabetes Care* (16): 434-444
27. Scandinavian Simvastatin Survival Study Group. Randomised trial of cholesterol lowering in 4444 patients with coronary heart disease: the Scandinavian Simvastatin Survival Study (4S). *Lancet*. 1994;344: 1383–1389.
28. Heart Protection Study Collaborative Group. *Lancet* 2004. 363: 757-67
29. Lawes CMM, Bennett DA, Feigin VL, Rodgers A. Blood pressure and stroke. An overview of published reviews. *Stroke* 2004; 35: 776 – 785
30. Staessen JA, Brikenhager WH. Evidence that the new antihypertensives are superior to older drugs. *Lancet* 2005; 366: 869-71
31. Verdecchia P, Rebaldi G, Angeli F, Gattobigio R, Bentivoglio M, thijs L, Staessen JA, Porcellati C. angiotensin-converting-enzyme (ACE) inhibitors and calcium channel blockers (CCBs) for coronary heart disease and stroke prevention. *Hypertension* 2005; 46: 386-392
32. Trenkwalder P, Elmfeldt D, Hofman A, Lithell H, Olofsson B, Padametriou V, Skoog I, Zanchetti A. The study on cognition and prognosis in the elderly (SCOPE) – major cardiovascular events and stroke in subgroups of patients. *Blood Pressure* 2005; 14: 31-37
33. Randomized Evaluation of Long-term anticoagulant therapy. Connolly SJ., et al. *N Engl J Med* 2009;361:1139-1151.
34. The Seventh Report of the Joint National Committee on Prevention, Detection, Evaluation, and Treatment of High Blood Pressure: The JNC 7 Report. *JAMA*. 2003;289(19):2560-2571

Secondary Prevention

- Warlow CP, Dennis MS, Van Gijn et. al. Preventing recurrent stroke and other serious vascular events. In: *Stroke: a practical guide to management*. Oxford: Blackwell Science, 2001:653-672.
- Huan Li, Wong KS Long term mortality and recurrent stroke risk among Chinese stroke patients with predominantly intracranial atherosclerosis *Stroke* 2003;34:2361-2366.
- Antithrombotic Trialists' Collaboration. Collaborative meta-analysis of randomized clinical trials of anti-platelet therapy for prevention of death, myocardial infarction and stroke in high risk patients. *BMJ* 2002; 324:71-86.
- The International Stroke Trial (IST): a randomised trial of aspirin, subcutaneous heparin, both, or neither among 19435 patients with acute ischaemic stroke. International Stroke Trial Collaborative Group. *Lancet* 1997;349: 1569-81.
- CAST: randomised placebo-controlled trial of early aspirin use in 20,000 patients with acute ischaemic stroke. CAST (Chinese Acute Stroke Trial) Collaborative Group. *Lancet* 1997;349:1641-9.
- Chen ZM, Sandercock P, Pan HC, et al. Indications for early aspirin use in acute ischemic stroke: A combined analysis of 40000 randomized patients from the Chinese acute stroke trial and the international stroke trial. On behalf of the CAST and IST collaborative groups. *Stroke* 2000;31:1240-9.
- Dutch TIA Trial Study Group: A comparison of two doses of aspirin (30 mg vs 283 mg a day) in patients after a transient ischemic attack or a minor ischemic stroke *N Engl J Med* 1991; 325: 1261-1266.
- Algra A, van Gijn: Aspirin at any dose above 30 mg offers only modest protection after cerebral ischaemia *J Neurol Neurosurg Psychiatry* 1996;60:197-199.
- Farrell B, Goodwin J, Richards S, Warlow C. The United Kingdom transient ischaemic attack (UK-TIA) aspirin trial: Final results. *J Neurol Neurosurg Psychiatry* 1991;54:1044-1054.
- Gent M, Blakely JA, Easton JD, Ellis DJ, Hachinski VC, Harbison JW, Panak E, Roberts RS, Sicurella J, Turpie AG The Canadian American Ticlopidine Study(CATS) in thromboembolic stroke. *Lancet*. 1989 June 3;1215-20.
- Goyan JE. The "trials" of a long term clinical trial: The ticlopidine aspirin stroke study and the Canadian American Ticlopidine Study. *Control Clin Trials*. 1989 Dec; 10(Suppl 4):S236-S244.
- CAPRIE steering committee. A randomized, blinded trial of clopidogrel versus aspirin in patients at risk of ischaemic events (CAPRIE). *Lancet* 1996;348:1329-1339.
- Ringleb PA, Bhatt DL, Hirsch AT, Topol EJ, Hacke W. Benefit of clopidogrel over aspirin is amplified in patients with a history of ischemic events. *Stroke*. 2004 Feb;35(2):528-32.
- Guidelines for Management of Ischaemic Stroke and Transient Ischaemic Attack 2009. Website accessed; <http://www.eso-stroke.org>. 18th January 2011.
- Shinohara Y, Katayama Y, Uchiyama S, et al, for the CSPS 2 group. Cilostazol for prevention of secondary stroke (CSPS 2): an aspirin controlled, double blind, randomized non –inferiority trial. *Lancet Neurology* 2010;9:959-68.
- Diener H, Cunha L, Forbes C, Silvenius J, Smets P, Lowenthal A European stroke prevention study 2, dipyridamole and acetylsalicylic acid in the secondary prevention of stroke *J Neurol Sci* 1996; 143: 1-13.
- HC Diener, Bogousslavsky J, Brass LM, Cimminiello C, Csiba L, Kaste M, Leys D, Matias-Guiu J, Rupprecht H on behalf of the MATCH investigators. Aspirin and clopidogrel compared with clopidogrel alone after recent ischaemic stroke or transient ischaemic attack in high risk patients (MATCH): randomized, double blind, placebo-controlled trial *Lancet* 2004;364:331-37.
- Mohr JP, Thompson JLP, Lazar RM, et al for the WARSS Study Group. *New Eng J Med* 2001;345:1444-1445.
- Chimowitz MI, Lynn MJ, Howlett-Smith H, et al. for the WASID Trial Investigators. *New Eng J Med* 2005;352:1305-1316.
- Gueyffier F, Boissel JP, Bouillon F, et.al. Effect of antihypertensive treatment in patients having already suffered from stroke. Gathering the evidence. The INDANA Project Collaborators. *Stroke* 1997;28:2557-62.
- Lawes CCM, Bennett Da, Feigin VL, Rodgers A. blood pressure and stroke: an overview of published reviews. *Stroke* 2004; 35: 776 785.
- PROGRESS Collaborative Group:Randomized trial of a perindopril-based blood pressure lowering regiment among 6105 individuals with previous stroke or transient ischaemic attack *Lancet* 2001;358:1033-1041.
- Lindholm LH, Ibsen H, Dahlöf B, Devereux RB, Beevers RB, de Faire U, Fyhrquist F et. al. Cardiovascular morbidity and mortality in patients with diabetes in the Losartan Intervention for endpoint reduction in hypertension study(LIFE): a randomized trial against atenolol. *Lancet* 2002;359:1004-1010.
- Heart Outcomes Prevention Evaluation study investigators. Effects of an angiotensin-converting–enzyme inhibitor, ramipril, on cardiovascular events in high-risk patients. *N Engl J Med* 2000;342:145-53.
- Jikei Heart Study Group. Valsartan in a Japanese population with hypertension and other cardiovascular disease: a randomised, open -label, blinded endpoint morbidity-mortality study. *Lancet* 2007;369:1431-1439.
- The ONTARGET Investigators. Telmisartan, Ramipril, or Both in Patients at High Risk for Vascular Events. *N Engl J Med* 2008;358:1547-59.
- American Heart Association Guidelines on Prevention of Stroke in patients with Ischaemic stroke or TIA. *Stroke* 2006; 37: 577-617.
- Prospective Studies Collaboration Cholesterol, diastolic blood pressure and stroke 13,000 strokes in 450,000 people in 45 prospective cohorts *Lancet* 1995; 346: 1647-1653.
- Heart Protection Study Collaborative Group. MRC/BHF Heart Protection Study of cholesterol lowering with simvastatin in 20536 high-risk individuals: a randomized placebo-controlled trial. *Lancet* 2002;360:7-22.
- UK Prospective Diabetes Study (UKPDS) Group Intensive blood-glucose control with sulphonylureas or insulin compared with conventional treatment and risk complications in patients with type 2 diabetes (UKPDS 33) *Lancet* 1998;352:837-853.
- Connolly SJ, Ezekowitz MD, Yusuf S, et al. Dabigatran versus warfarin in patients with atrial fibrillation. *N Eng J Med* 2009;361:1139-51.
- Patel MR, Mahaffey KW, Garg J, et al. Rivaroxaban versus warfarin in nonvalvular atrial fibrillation. *N Eng J Med* 2011;365:883-91.
- Granger CB, Alexander JH, McMurray JJV, et al. Apixaban versus warfarin in patients with atrial fibrillation. *N Eng J Med* 2011. DOI: 10.1056/NEJMoa1107039.

9- Cardioembolism

1. 6th ACCP Consensus Conference on Antithrombotic Therapy (co-chairs: J Dalen, J Hirsch, G Guyatt) CHEST 119/1 (Suppl.) Jan 2001
2. ABC of antithrombotic therapy (eds GY Lip, A Blann) BMJ Publishing (London) 2003
3. Guidelines for the early management of patients with ischemic stroke. A scientific statement from the stroke council of the American Stroke Association. (Adams HP, chair). Stroke 2003;34:1056-1083.
4. McNamara RL, Lima AC, Whelton PK, Pore NR. Ecocardiographic identification of cardiovascular sources of emboli to guide clinical management of stroke: A cost-effectiveness analysis. Ann Intern Med 1997;127:775-787.
5. Lip GYH. Thromboprophylaxis for atrial fibrillation. Lancet 1999;353:4-6.
6. Bonow RO, Carabello D, de Leon AC, et al. ACC/AHA guidelines for the management of patients with valvular heart disease. J Am Coll Cardiol 1998;32:1486-8.
7. Lip GYH, Frison L, Halperin JL, et al. Comparative validation of a novel risk score for predicting bleeding risk in anticoagulated patients with atrial fibrillation. J Am Coll Cardiol 2011; 57:173-80.
8. Pisters R, Lane DA, Nieuwelaar R, et al. A novel, user-friendly score (HAS-BLED) to assess one-year risk of major bleeding in atrial fibrillation patients: The Euro Heart Survey. Chest 2010; 138:1093-100.
9. Connolly SJ, Ezekowitz MD, Yusuf S, et al. Dabigatran versus warfarin in patients with atrial fibrillation. N Eng J Med 2009; 361:1139-51.
10. Patel MR, Mahaffey KW, Garg J et al. Rivaroxaban versus warfarin in nonvalvular atrial fibrillation. N Eng J Med 2011; 365:883-91.
11. Granger CB, Alexander JH, McMurray JJV, et al. Apixaban versus warfarin in patients with atrial fibrillation. N Eng J Med 2011. DOI: 10.1056/NEJMoa1107039.

10- Revascularisation Procedures

1. Adams HP, et al. for the Stroke Council of the American Heart Association/ American Stroke Association. Guidelines for the early management of patients with ischemic stroke. Stroke 2003;34:1056-1083.
2. Rothwell PM, et al. Endarterectomy for symptomatic carotid stenosis in relation to clinical subgroups and timing of surgery. Lancet 2004;363:915-924.
3. ACST Collaborative Group. Prevention of disabling and fatal strokes by successful carotid endarterectomy in patients without recent neurological symptoms: randomized controlled trial. Lancet 2004;363:1491-1501.
4. Rothwell PM, et al. Analysis of pooled data from the randomized controlled trials of endarterectomy for symptomatic carotid stenosis. Lancet 2003;361:107-115.
5. North American Symptomatic Carotid Endarterectomy Trialists' Collaborative Group. The final results of the NASCET trial. N Eng J Med 1998;339:1415-25.
6. The European Carotid Surgery Trialists (ECST) Collaborative Group. Risk of stroke in the distribution of an asymptomatic carotid artery. Lancet 1995;345:209-212.
7. Baker WH, et al for the ACAS Investigators: Effect of contralateral occlusion on long-term efficacy of endarterectomy in the Asymptomatic Carotid Atherosclerosis Study (ACAS). Stroke 2000;31:2330-2334.
8. EC/IC Bypass Study Group. Failure of extracranial-intracranial arterial bypass to reduce the risk of ischemic stroke. Results of an international randomized trial. N Eng J Med 1985;313:1191-2000.
9. European Stroke Initiative Recommendations for Stroke Management – Update 2003. Cerebrovasc Dis 2003;16:311-337.
10. North American Symptomatic Carotid Endarterectomy Trial Collaborators (NASCET) Beneficial effect of carotid endarterectomy in symptomatic patients with highgrade carotid stenosis N Engl J Med 1991; 325: 445-453
11. European Carotid Surgery Trialists' Collaborative Group: MRC European Carotid Surgery Trial: Interim results for symptomatic patients with severe (70-99%) or with mild (0-29%) carotid stenosis. Lancet 1991; 337: 1235-1243
12. Barnett HJ, Taylor DW, Eliasziw M, Fox AJ, Ferguson GG, Haynes RB, Rankin RN, Claggett GP, Hachinski VC, Sackett DL, Thorpe KE, Meldrum HE: Benefit of carotid endarterectomy in patients with symptomatic moderate or severe stenosis. N Engl J Med 1998;339:1415-1425
13. Executive Committee for the Asymptomatic Carotid Atherosclerosis Study (ACAS) Endarterectomy for asymptomatic carotid artery stenosis. JAMA 1995; 273: 1421-1428
10. Featherstone RL, Brown MM, Coward LJ. International carotid stenting study: protocol for a randomized clinical trial comparing carotid stenting with endarterectomy in symptomatic carotid artery stenosis. Cerebrovasc Dis. 2004;18(1):69-74
11. Hobson RW II: CREST (Carotid Revascularization Endarterectomy versus Stent Trial): background, design and current status. Semin Vasc Surg 2000 13:139-143
12. CAVATAS Investigators: Endovascular versus surgical treatment in patients with carotid stenosis in the Carotid and Vertebral Artery Transluminal Angioplasty Study (CAVATAS): a randomised trial. Lancet 2001; 357: 1729-1737
13. Lutsep HL, Barnwell SL, Mawad M, et al. Stenting of symptomatic atherosclerotic lesions in the vertebral or intracranial arteries: study results. Stroke 2003;34:253
14. Adnan I Qureshi Endovascular treatment of cerebrovascular diseases and intracranial neoplasms Lancet 2004; 363: 804–13
15. CREST investigators. Stenting versus Endarterectomy for Treatment of Carotid-Artery Stenosis. NEJM 2010;363:11-23
16. Ringelb PA, Allenberg J, Bruckmann H, et al. 30 Day results from the SPACE trial of stent-protected angioplasty versus carotid endarterectomy in symptomatic patients: a randomised non-inferiority trial. Lancet 2006;368:1239-47
17. Ederle J, Dobson J, Featherstone RL, et al. Carotid artery stenting compared with endarterectomy in patients with symptomatic carotid stenosis (International Carotid Stenting Study): an interim analysis of a randomised controlled trial. Lancet 2010;375:985-97

11- Stroke in Special Circumstances

1. Einhaupl K, Villringer A, Meister W, et al. Heparin treatment in sinus venous thrombosis. Lancet 1991; 338: 597-600
2. de Bruijn SFTM, Stam J, for the cerebral venous thrombosis study group. Randomised, placebo-controlled trial of anticoagulant treatment with low-molecular-weight heparin for cerebral sinus thrombosis. Stroke 1999; 30: 484-8
3. Sharshar T, Lamy C, Mas J. Incidence and causes of strokes associated with pregnancy and puerperium. A study in public hospitals of Ile de France. Stroke 1995;26:930-6
4. Lanska DJ, Kryscio RJ. Risk factors for peripartum and postpartum stroke and intracranial venous thrombosis. Stroke 2000;31:1274-82.
5. James AH, Bushnell CD, Jamison MG, et al. Incidence and risk factors for stroke in pregnancy and the puerperium. Obstet Gynecol 2005;106:509-16.
6. Jaigobin C, Silver FL. Stroke and pregnancy. Stroke 2000;31:2948-51.
7. Ros HS, Lichtenstein P, Bellocchio R, et al. Increased risks of circulatory diseases in late pregnancy and puerperium. Epidemiology 2001;12:456-60.
8. Lanska DJ, Kryscio RJ. Risk factors for peripartum and postpartum stroke and intracranial venous thrombosis. Stroke 2000;31:1274-82.
9. Ros HS, Lichtenstein P, Bellocchio R, et al. Pulmonary embolism and stroke in relation to pregnancy: How can high-risk women be identified? Am J Obstet Gynecol 2002;186:198-203.

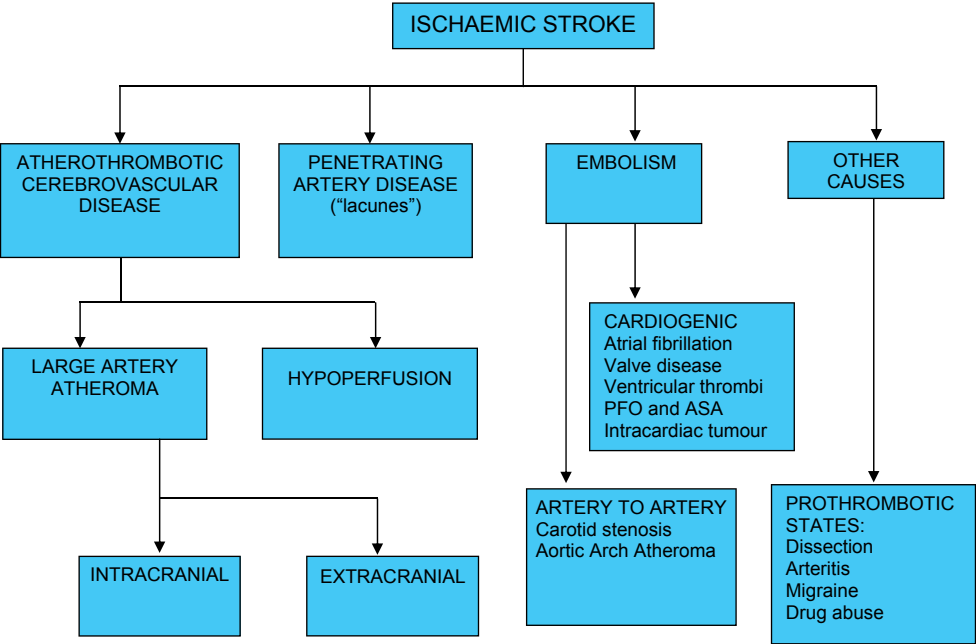
APPENDIX A

Oxfordshire Community Stroke Project Classification (OCSP)

Total Anterior Circulation Stroke (TAC)	<p>All of</p> <ul style="list-style-type: none"> • Hemiplegia contralateral to the cerebral lesion, usually with ipsilateral hemisensory loss • Hemianopia contralateral to cerebral lesion • New disturbance of higher cerebral function (dysphasia, visuospatial)
Lacunar Stroke (LAC)	<ul style="list-style-type: none"> • Pathological definition • Occlusion of a single deep (LS) perforating artery • 5% can be due to haemorrhage • Occurs at strategic sites • More likely seen on MRI than CT scan • Classical lacunar syndromes correlated with relevant lacunes at autopsy
Partial Anterior Circulation Stroke (PAC)	<p>Any of</p> <ul style="list-style-type: none"> • Motor / sensory deficit + hemianopia • Motor/sensory deficit + new higher cerebral dysfunction • New higher cerebral dysfunction + hemianopia • New higher cerebral dysfunction alone • A pure motor/sensory deficit less extensive than for LAC (eg. confined to one limb, or to face and hand but not to whole arm)
Posterior Circulation Stroke (POC)	<p>Any of</p> <ul style="list-style-type: none"> • Ipsilateral cranial nerve palsy (single / multiple) with contralateral motor and/or sensory deficit • Bilateral motor and/or sensory deficit • Disorder of conjugate eye movement (horizontal/vertical) • Cerebellar dysfunction without ipsilateral long tract sign • Isolated hemianopia or cortical blindness <p>Other signs include Horner's sign, nystagmus, dysarthria, hearing loss, etc</p>
Code last letter as follows:	
(S)	<p>Syndrome: Indeterminate pathogenesis, prior to imaging (e.g. TACS)</p> <p>Infarct (e.g., TACI)</p> <p>Haemorrhage (e.g., TACH)</p>
(I)	
(H)	

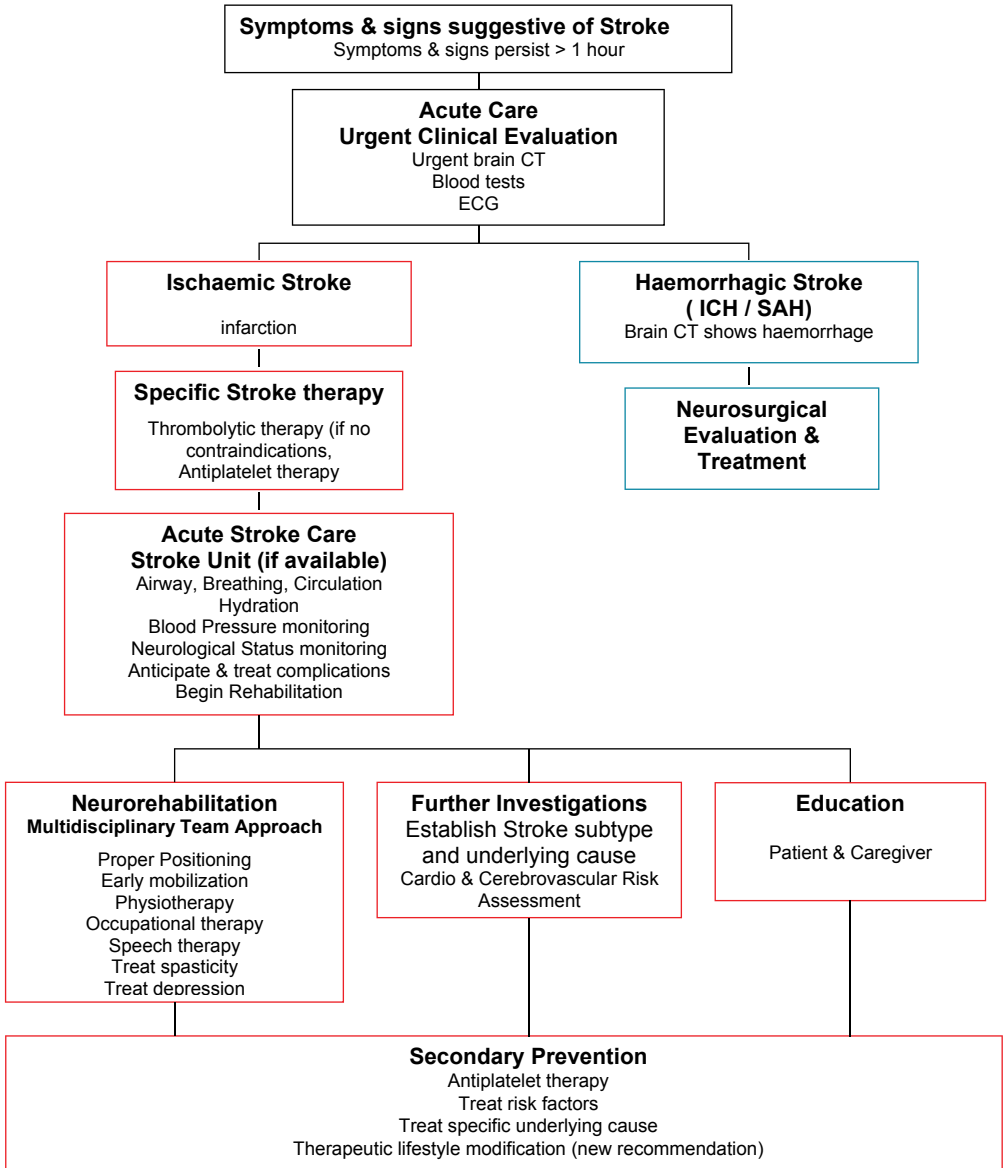
APPENDIX B

Stroke Pathophysiology Algorithm



APPENDIX C

Stroke Management Algorithm



APPENDIX D

Therapeutic Agents Available in Malaysia

Anti-platelets	Cyclo-oxygenase inhibitors Acetylsalicylic acid (Aspirin) Triflusal (new) Adenosine Diphosphate Receptor Antagonists Ticlopidine Clopidogrel Other Antiplatelet Agents - Dipyridamole - Cilostazol (new)
Anticoagulants IV Oral	Unfractionated Heparin (UFH) Heparin Low Molecular Weight Heparin (LMWH) Nadroparin Enoxaparin Fondaparinux Warfarin Dabigatran Etexilate (new)
Thrombolytics	Recombinant-tissue PA (rt-PA) Alteplase

APPENDIX E (new recommendation)

CHA₂DS₂VASc score and stroke rate

(a) Risk factor for stroke and thrombo-embolism in non-valvular AF		
'Major' risk factors		'Clinically relevant non-major' risk factors
Previous stroke, TIA, or systemic embolism Age ≥75 years		Heart failure of moderate to severe LV systolic dysfunction (e.g. LV EF ≤40%) Hypertension - Diabetes mellitus Female sex - Age 65-74 years Vascular disease ^a
(b) Risk factor-based approach expressed as a point based scoring system, with the acronym CHA ₂ DS ₂ VASc (Note: maximum score is 9 since age may contribute 0, 1, or 2 points)		
Risk factors		Score
Congestive heart failure/LV dysfunction		1
Hypertension		1
Age ≥75		2
Diabetes mellitus		1
Stroke/TIA/thrombo-embolism		2
Vascular disease ^a		1
Age 65-74		1
Sex category (i.e. female sex)		1
Maximum score		9
(c) Adjusted stroke rate according to CHA ₂ DS ₂ VASc score		
CHA ₂ DS ₂ VASc score	Patients (n=7329)	Adjusted stroke rate (%/year ^b)
0	1	0%
1	422	1.3%
2	1230	2.2%
3	1730	3.2%
4	1718	4.0%
5	1159	6.7%
6	679	9.8%
7	294	9.6%
8	82	6.7%
9	14	15.2%

See text for definitions.

^aPrior myocardial infarction, peripheral artery disease, aortic plaque. Actual rates of stroke in contemporary cohorts may vary from these estimates.

^bBased on Lip *et al.*⁵³

AF = atrial fibrillation; EF = ejection fraction (as documented by echocardiography, radionuclide ventriculography, cardiac catheterization, cardiac magnetic resonance imaging, etc.); LV = left ventricular; TIA = transient ischaemic attack.

APPENDIX F (new recommendation)

Swallowing Test

Various water swallowing tests are available; recommended as follow.

1. Kidd Water Test

Description: Clinical examination includes pharyngeal sensation assessed by orange stick, tongue and facial movement, speech, sensory and perceptual function and muscle strength also assessed. Ability to swallow also assessed by patient swallowing 50 ml of water in 5 ml allotments.

Source: Kidd D, Lawson J, Nesbitt R, MacMahon J. Aspiration in acute stroke: a clinical study with videofluoroscopy. *Quarterly Journal of Medicine*. 1993 86:825-829.

2. Nishiwaki et al.

Description: Scores 6 items including lip closure, tongue movement, palatal elevation, gag reflex, voice quality and motor speech function. Also includes a saliva swallowing test. After patient swallows 1 teaspoon of water twice, asked to drink the rest of the water from a cup for a total of 30 ml.

Source: Nishiwaki K, Tsuji T, Liu M, Hase K, Tanaka N, Fujiwara T. Identification of a simple screening tool for dysphagia in patients with stroke using factor analysis of multiple dysphagia variables. *J Rehabil Med*. 2005 Jul;37(4):247-51.

3. CODA

Standardized Swallowing Assessment (SSA)

Description: Pre-swallowing check list if passed is followed by teaspoon sips of water 3 times, followed by half glassful of water. (Grade A, strong evidence Westergren, 2006).

Source: Perry, L. Screening swallowing function of patients with acute stroke. Part one: identification, implementation and initial evaluation of a screening tool for use by nurses. *Journal of Clinical Nursing* 2001; 10: 463-473.

APPENDIX G

Resources – Societies & Associations

Malaysian Society of Neurosciences

Mailing Address:

Level 15, CREST, 3 Two Square,

No 2, Jalan 19/1, 46300 Petaling Jaya, Selangor.

Website: www.neuro.org.my

NASAM (National Stroke Association of Malaysia)

- | | |
|---|---|
| <p>1. NASAM Headquarters
No 12, Jalan 7/2
46050 Petaling Jaya
Selangor Darul Ehsan
Tel: 03-7956 4840 / 7956 1876
Fax: 03-7956 2275
Email : nasampj@nasam.org
Open : Mon-Fri: 9am - 5pm</p> | <p>5. NASAM Ampang
No 9, Lorong Awan 1
68000 Ampang
Selangor Darul Ehsan
Tel: 03-4256 1234
Fax: 03-4256 5360
Email : nasamampang@nasam.org
Open : Mon-Fri: 9am - 4pm</p> |
| <p>2. NASAM Penang
No 9, Jesselton Crescent
10350 Pulau Pinang
Tel: 04-229 8050
Tel: 04-226 0563
Email : nasampenang@nasam.org
Open : Mon-Fri: 10am - 12noon</p> | <p>6. NASAM Perak
No. 9, Lorong Pinji
Off Jalan Pasir Puteh
31560 Ipoh, Perak
Tel: 05-321 1089
Fax: 05-322 4759
Email : nasamperak@nasam.org
Open : Mon-Fri: 9am - 5pm</p> |
| <p>3. NASAM Johor
No 59, Jalan Cendera
Serene Park
80300 Johor Bahru, Johor
Tel: 07-223 0075
Fax: 07-223 0076
Email : nasamjohor@nasam.org</p> | <p>7. NASAM Kuantan
A2134 Lorong Kubang Buaya 2
25250 Kuantan, Pahang
Tel/Fax: 09-566 8195
Email : nasamkuantan@nasam.org</p> |
| <p>4. NASAM Sabah
Kompleks Badan-Badan Sukarela
Wisma Pandu Puteri
KM4 Jalan Tuaran
88801 Kota Kinabalu
Tel: 08-826 1568
Fax: 08-826 8568
Email : nasamsabah@nasam.org
Open : Mon-Fri: 9am - 5pm</p> | <p>8. NASAM Malacca
5132-C, Jalan Datuk Palembang
Bukit Baru
75150, Melaka
Tel/Fax: 06-231 0177
Email : nasammalacca@nasam.org
Open : Mon-Fri: 10am - 12noon
2pm - 4pm</p> |

**9 KPI Recommended by Stroke Council Malaysian Society
of Neurosciences (MSN) 2011
(Used in Malaysian National Stroke Registry)**

1. **Deep Vein Thrombosis (DVT) Prophylaxis**
2. **Discharged on Antithrombotic Therapy**
3. **Patients with Atrial Fibrillation Receiving Anticoagulation Therapy**
4. **Thrombolytic Therapy Administered**
5. **Antithrombotic Therapy by End of Hospital Day Two**
6. **Discharged on Cholesterol Reducing Medication**
7. **Dysphagia Screening**
8. **Stroke Education**
9. **Assessed for Rehabilitation**

APPENDIX I (new recommendation)

National Institutes of Health Stroke Scale (NIHSS)

1a. LOC	0=alert and responsive 1=arousable to minor stimulation 2=arousable only to painful stimulation 3=reflex responses or unarousable	
1b. LOC Questions – Ask patient's age and month. Must be exact.	0=Both correct. 1=One correct (or dysarthria, intubated, foreign language). 2=Neither correct	
1c. Commands – Open/close eyes, grip and release non-paretic hand.	0=Both correct (ok if impaired by weakness) 1=One correct. 2=Neither correct	
2. Best Gaze – Horizontal EOM by voluntary or Doll's.	0=Normal. 1=Partial gaze palsy; abnormal gaze in 1 or both eyes 2=Forced eye deviation or total paresis which cannot be overcome by Doll's.	
3. Visual Field – Use visual threat if necessary. If monocular, score field of good eye.	0=No visual loss 1=Partial hemianopia, quadrantanopia, extinction 2=Complete hemianopia 3=Bilateral hemianopia or blindness	
4. Facial Palsy – If stuporous, check symmetry of grimace to pain.	0=Normal. 1=Minor paralysis, flat nasolabial fold, asymmetrical smile 2=Partial paralysis (lower face = UMN) 3=Complete paralysis (upper & lower face)	
5. Motor Arm – Arms outstretched 90 degrees (sitting) or 45 degrees (supine) for 10 sec. Encourage best effort. Circle paretic arm in score box.	0=No drift. 1=Drift but does not hit bed 2=Some antigravity effort, but cannot sustain 3=No antigravity effort, but even minimal movement counts 4=No movement at all X=Unable to assess due to amputation, fusion, fractures, etc.	L / R
6. Motor Leg – Raise leg to 30 degrees supine x 5 sec.	0=No drift . 1=Drift but does not hit bed 2=Some antigravity effort, but cannot sustain 3=No antigravity effort, but even minimal movement counts 4=No movement at all X=Unable to assess due to amputation, fusion, fractures, etc.	L / R
7. Limb Ataxia – Check finger-nose-finger; heel-shin; and score only if out of proportion to paralysis	No ataxia. 1=Ataxia in upper or lower extremity. 2=Ataxia in upper AND lower extremity X=Unable to assess due to amputation, fusion, fractures, etc.	L / R
8. Sensory – Use safety pin. Check grimace or withdrawal if stuporous. Score only stroke-related losses.	0=Normal. 1=Mild-mod unilateral loss but patient aware of touch (or aphasic, confused) 2=Total loss, patient unaware of touch. Coma, bilateral loss	
9. Best Language – Describe cookie jar picture, name objects, read sentences. May use repeating, writing, stereognosis	0=Normal 1=Mild-mod aphasia; (difficult but partly comprehensible) 2=Severe aphasia; (almost no info exchanged) 3=Mute, global aphasia, coma. No 1 step commands	
10. Dysarthria – Read list of words	0=Normal; 1=Mild-mod, slurred but intelligible 2=Severe; unintelligible or mute X=Intubation or mechanical barrier	
11. Extinction/Neglect – Simultaneously touch patient on both hands, show fingers in both visual fields, ask about deficit, left hand.	0=Normal, none detected. (visual loss alone) 1=Neglects or extinguishes to double simultaneous stimulation in any modality (visual, audio, sensory, spatial, body parts) 2=Profound neglect in more than one modality	

APPENDIX J (new recommendation)

Modified Rankin Scale

0 = No symptoms at all.

1 = **No significant disability** despite symptoms;
Able to carry out all usual duties and activities.

2 = **Slight** disability;
Unable to carry out all previous activities, but able to look after own affairs without assistance.

3 = **Moderate** disability requiring some help, but able to walk without assistance.

4 = **Moderate severe** disability;
Unable to walk without assistance and unable to attend to own bodily needs without assistance.

5 = **Severe disability**;
Bedridden, incontinent, and requiring constant nursing care and attention.

6 = **Dead**.

Stroke Resources on World-wide Web

1. National Stroke Foundation
www.strokefoundation.com.au
2. Stroke Centre at Washington University
www.strokecenter.org
3. American Heart Association
www.americanheart.org
4. American Academy of Neurology
www.aan.com
5. American Stroke Association
www.strokeassociation.org
6. European Stroke Initiative (EUSI)
www.eusi-stroke.com
7. Royal College of Physician
www.rcplondon.cu.uk/pubs/books/stroke
8. Stroke Association
www.stroke.org.uk

SOURCES OF FUNDING

The development of the CPG on Management of Ischaemic Stroke was supported financially by Boehringer Ingelheim (M) Sd. Bhd.

DISCLOSURE STATEMENT

The panel members had completed disclosure forms. None held shares in pharmaceutical firms or acted as consultants to such firms.

(Details are available upon request from the CPG Secretariat)

ACKNOWLEDGEMENTS

The chairperson of this guideline would like to express his gratitude and appreciation to the following for their contribution:

All members of the work group and the reviewers for their dedication and commitment.

Boehringer Ingelheim for providing secretarial support.

Health Technology Assessment division of Ministry of Health.

Dato Dr Rosli Mohd Ali, Consultant Cardiologist, IJN.

Dato Dr Omar Ismail, Consultant Cardiologist, Penang General Hospital.

Prof Dr Sim Kui Hian, Consultant Cardiologist, Sarawak General Hospital.

Dr Lam Khai Huat, Consultant Cardiologist, Assunta Hospital.

ISBN 978-967-11469-0-3



9 789671 146903